

RESOURCE *Connector*

the official publication of the northern interior mining group



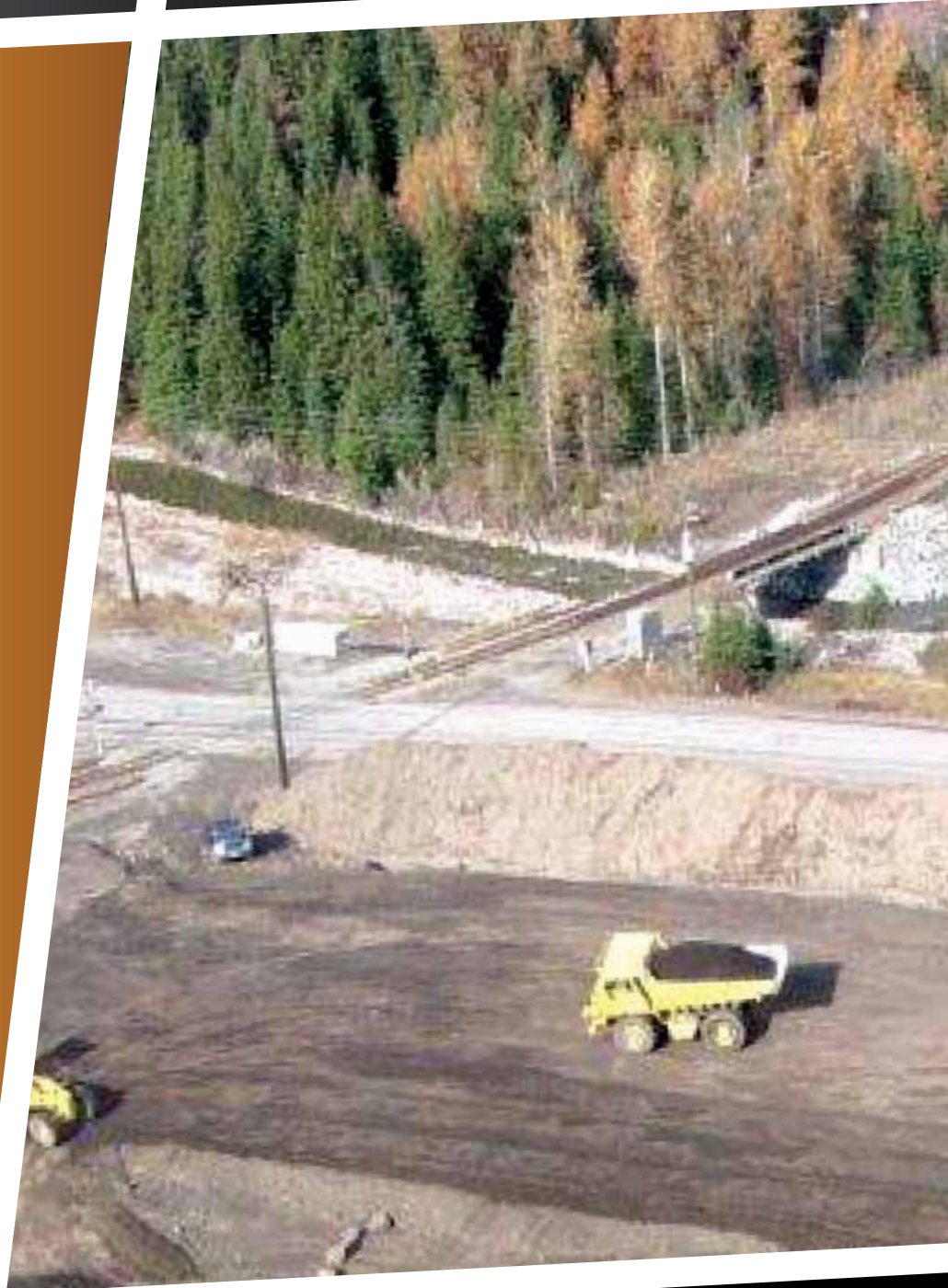
NIMG
northern interior mining group
inaugural issue

PUBLICATIONS MAIL AGREEMENT #40934510



SIMS GROUP

www.simgroup.ca
1-877-564-9011



INDUSTRIAL • MINING CIVIL • POWER



Northwest Community College's award-winning School of Exploration & Mining (NWCC SEM) provides hands on skills and professional development training for the natural resource industry with a focus on exploration and mining.

NWCC SEM uses its flexible and responsive model to offer innovative training customized for remote and community based delivery in partnership with industry and local communities. NWCC SEM is producing job-ready graduates and the leaders of tomorrow for the mineral industry. **Hire one today!**

Toll Free: 1.877.277.2288

sem@nwcc.bc.ca

Check us out on film: vimeo.com/58598851

NIMG Leadership Message - Onward and Upward	6
Message from the Minister of Energy and Mine	8
NIMG Helps Businesses Connect With the Mining Industry	9
NIMG Leader Profile: Veteran Prospector Dave Forshaw	11
Exploration and Mining in Northern British Columbia	12
Prince George: Service and Supply Hub for the Region's Mining Industry	16
Terrace: B.C.'s Gateway to the North	19
Kim Forest Management is Ready to Service B.C.'s Mining Sector	22
B.C. colleges work with BC AMTA to fill the labour void	24
Making It Happen: New Nadin's Ellen Clements	26
Award-Winning Reclamation Work Ongoing At Kemess South	28
Northern Thunderbird Air: Thinking Outside the Box	30
Northwest Transmission Line Opens Up the Region for Development	31
The Growing Need for Strategic and Human Resource Plans	34
Mackenzie Bulk Transfer Terminal Poised to Diversify the Region's Industries	36
Brock White Expands To Better Serve Northern B.C.	38
New Gold Works With Communities on the Blackwater Project	40
Prima Fluorspar Corp. Looks to Become a Global Fluorspar Leader	42
Fostering Community: Mount Milligan Provides Regional Opportunities	44
Situational Awareness for Remote Worksites	46
Aley Niobium Project Adds to B.C.'s Mining Excitement	48
NIMG in Action: 2013 NIMG Networking Event Connects Suppliers to Industry	50
Geoscience BC Encourages Exploration and Investment in Northern B.C.	52
Northern Spirit Transportation Hits the Road	54
Northwest Training Ltd. - Empowering Individuals	56
An Agreement to Build Upon	58
Northern Steel Ltd. Gets the Job Done Right	60
Genomics: A New Tool in Bioremediation	62
Overcoming Challenges Facing Mining Development	64
Breakthroughs in Brake and Clutch Design	66
Smithers: Mining's Jewel of the North	68
Making the Trip a Little Better	70
All-West Crane & Rigging Ltd.:	
A Contender in the Heavy Construction and Mining Industry	72
Bringing Family Care to Industry	74
PDAC 2014: Where Industry Meets	76
Index to Advertisers	78

Published by:
DEL Communications Inc.
Suite 300, 6 Roslyn Road
Winnipeg, MB R3L 0G5
Toll Free: 1.866.831.4744

President
David Langstaff

Publisher
Jason Stefanik

Editor
Lyndon McLean
lyndon@delcommunications.com

Advertising Sales Manager
Dayna Oulion

Advertising Sales
Robert Bartmanovich
Cheryl Ezinicki
Brian Gerow
Ross James
Michelle Raike

Production services provided by:
S.G. Bennett Marketing Services
www.sgbennett.com

Art Director
Kathy Cable

Layout/ Design
Dana Jensen

Advertising Art
Caitlyn Hawrysh Haier
Joel Gunter

*On the cover: Mount Milligan
Copper-Gold Mine*

©Copyright 2014. NIMG. All rights reserved. The contents of this publication may not be reproduced by any means, in whole or in part, without the prior written consent of the publisher.

While every effort has been made to ensure the accuracy of the information contained in and the reliability of the source, the publisher in no way guarantees nor warrants the information and is not responsible for errors, omissions or statements made by advertisers. Opinions and recommendations made by contributors or advertisers are not necessarily those of the publisher, its directors, officers or employees.

Publications mail agreement #40934510
Return undeliverable Canadian addresses to:
DEL Communications Inc.
Suite 300, 6 Roslyn Road
Winnipeg, MB R3L 0G5

DEL
Communications Inc.

PRINTED IN CANADA | 01/2014

ENTREC is a leading provider of heavy lift and heavy haul services with offerings encompassing crane services, heavy haul transportation, engineering, logistics and support. We are growing and the possibilities are endless.

LIST OF SERVICES:

- Heavy haul specialized hydraulic platform trailers
- Heavy haul with multi wheel conventional trailers
- Heavy Lift Crane Services
- Picker Truck Services
- Jack and Slide
- Project & Logistical Management including on site transportation solutions
- Engineering solutions
- Compression Load Cell Weighing
- Center of Gravity Reports
- Route and Feasibility Studies
- Fenced Storage and Marshalling Yard



GO TO WWW.ENTREC.COM AND YOU WILL GET A COMPLETE LIST OF SERVICES



HEAVY LIFT
DRIVEN BY PEOPLE
HEAVY HAUL

1.888.962.1600
www.entrec.com
TSX- V:ENT

ONWARD AND UPWARD: Northern B.C. is the Place to Be

Northern British Columbia's vision of prosperity is unquestionable. In truth, this economic climate is astoundingly affluent thanks to the abundance of natural resources, from forestry to oil and gas, liquefied natural gas and mining. As a result, the Northern Interior Mining Group (NIMG) has recently made a bold move in an effort to best serve the region—by expanding the group's mandate to include all natural resource sectors.

Ideally, the expanded mandate is about community-building. It's about working with current and proposed resource decision makers to further build up the North. Further, it the NIMG team's belief that the new mandate is also about better fostering support of suppliers and service providers as they all look to capitalize on and participate

in the historic opportunity B.C.'s natural resource sector presents.

"Northern B.C. is the place to be when it comes to job and career opportunities if you are involved in or want to be involved in the resource sector," says NIMG vice-chair Iain Elder of Amtec Ltd. (Western Region), "and there will be increased demand for businesses offering goods and services. Businesses need to be prepared."

This idea of expansion continues through to the group's educational and networking offerings, which this year will be broadened to support resource development in its entirety. Working closely with the North's universities, colleges, graduates, and business, the group aims to bring about solutions and energy for current and proposed

resource projects for the benefit of the North, for B.C., and Canada.

"Business clusters such as these are a step in the right direction, as they foster flexible and value-driven solutions for the growing array of current and proposed resource projects in northern B.C.," says NIMG chair Fraser Deacon of Geotech Drilling Services Ltd.

"As major forest companies continue to restructure their operations, this is having a significant impact on the B.C. economy. There is, however, a bright future for Canadians and British Columbians alike, not only in the mining sector but other resource industries as well," says retiree Randy Schneider, NIMG treasurer. "The mining industry in particular in northwestern B.C. has become very prevalent, gaining momentum over the last few years with the opening of new mines, existing mine expansion, and increased exploration and drilling activity. There is a bright future in British Columbia with its abundance of precious metals, coal, oil, and natural gas."

Going into 2014, it is the leadership team's hope that the NIMG Directory and Resource Connector will become a "first-grab" for the North, and that businesses would be considered qualified bidders to support projects within northern B.C. The group's primary focus for the upcoming year is to work diligently to provide the vehicle and opportunity to connect businesses within surrounding communities to resource-based companies and organizations through networking events and forums.

The new Resource Connector magazine is just that—a connector of industry, much like the NIMG. In this inaugural edition, the NIMG leadership team invites you to share in their collective and optimistic vision for 2014 and onward. ●

Sales • Service • Rentals • Installations

BK Leaders in Wireless
TWO-WAY RADIO LTD.

Prince George
3963 15th Ave
250-562-4856
1-877-898-4856

Quesnel
1905 Hwy 97 N
250-992-9007

KENWOOD
AUTHORIZED DEALER

Two-Way Radio • Cellular • Smart Phones • Satellite Phones • SPOT • High Speed Satellite Internet www.bktwoway.ca



VAN HOUTTE COFFEE SERVICES
Prince George | Terrace | Williams Lake



1-800-663-5026

FAX: 250-564-0283

#3 1722 Ogilvie Street,
Prince George BC V2N 1W9



Experience, Expertise and Common Sense.

Let's Make it Happen.

Serving Northern and Central BC's natural resource, transportation
and industrial sectors since 1990.

WWW.DWBCONSULTING.CA

DWB Consulting Services Ltd.

ENGINEERING ▲ ENVIRONMENTAL ▲ FORESTRY ▲ MAPPING



THE HONOURABLE BILL BENNETT, Minister of Energy and Mines



Congratulations to the Northern Interior Mining Group on the inaugural issue of your new magazine.

The mining industry is worth \$8.3 billion to B.C.'s economy and supports thousands of well-paying, secure jobs for families in communities throughout our province.

Mining builds communities. All across British Columbia, you will find communities sustained by mining projects. Today, the average salary in the mining industry is more than \$100,000, which provides stability and opportunity to thousands of families.

Mining also employs more First Nations people than any other industry in Canada. In B.C., revenue sharing agreements are helping provide important services First Nations communities need, while training programs are ensuring First Nations workers have the skills they need to take advantage of new job opportunities. For example, nearly one quarter of workers at the recently opened New Afton mine near Kamloops are participants in the BC Aboriginal Mine

Training Association program.

To ensure mining continues to support families and communities across British Columbia, our government has set a target to open eight new mines and expand nine existing mines by 2015. With one new mine in operation, six mines under construction or permitted and six expansions to existing mines approved, we are more than halfway towards meeting this goal and communities across B.C. are already seeing the benefits.

Anyone with a family member working in the mining industry knows the importance of safety and we should all be proud of the mining industry's record as one of the safest heavy industries in British Columbia. Each year, B.C. promotes best practices in health, safety and environmental sustainability and we will continue to work with industry to support and recognize important safety initiatives.

Working together, we can ensure our province remains a desirable place to invest, explore and develop mineral resources for many years to come. ●

You're at home here.



WE EXPEDITE & DELIVER

VANDERHOOF and DISTRICTS CO-OPERATIVE ASSOCIATION

Bulk Petroleum - Food Floor Home & Argo Centre

15 Cardlock Locations: Fort St. James to Quesnel, Terrace To Valemount, Fuel Tank Sales & Rentals, Bulk Fuel and Oil Deliveries:

Vanderhoof Toll Free: **1-888-545-2667** | Houston: **1-800-848-6347**
Prince George: **1-866-309-2667** | Quesnel: **1-888-992-2667** | Terrace: **1-250-635-9595**

Head Office - Vanderhoof & Districts Toll Free: **1-877-567-4414**
C-Store, Gas Bar, Propane, Lube Oils & Marine Fuel: **250-567-4486**

Quesnel Agro/C-Store- Agro, Feed, Fertilizer, Lube Oils, Hardware, Confectionery Store: **250-992-7274**
Food Store- Grocery, In Store Bakery, Deli, Fresh Meat, Produce, Housewares: **250-567-4406**
Home Centre-Hardware, Building Materials, Flooring, Appliances, Agro, Feed & Fertilizer: **250-567-4464**



BUILDING A SUSTAINABLE FUTURE: NIMG Helps Businesses Connect With Mining Industry

By Lisa Fattori

Founded in 2008, Northern Interior Mining Group (NIMG) helps to connect businesses in the region with mining and exploration companies that need a diverse range of products and services. NIMG tries to forge better links between area businesses and mining companies active in the region through better two-way communication and common promotional events. The tremendous growth in mining in B.C.'s northern interior in recent years presents a great opportunity for businesses to diversify and lend their expertise to this burgeoning industry, thereby creating prosperity, not just at the local level, but for the entire region.

"Mining companies need a supply chain of businesses and business saw the opportunity to share their expertise and leverage this for the mining industry," says Fraser Deacon, President of NIMG. "It's about retaining and building a knowledge cluster. The challenge lies in building critical mass and finding ways that companies can partner to handle big projects."

Unlike many associations and societies, NIMG is interested in mining from a service perspective and was founded by a variety of stakeholders, from manufacturers, suppliers and machine works specialists to prospectors, consultants, construction professionals, the College of New Caledonia and the University of Northern B.C. The Group began promoting its mandate at various industry trade shows, including the AME BC Mineral Exploration Roundup Conference, and worked hard to promote businesses in the northern interior as candidates to service the development of the Mt. Milligan mine, as well as other projects.

"There are hundreds of junior mining companies in Vancouver looking at central B.C.," says NIMG past-President Dave Forshaw, a prospector and councillor for the District of Mackenzie.

"What was happening is these companies would get their service people in the lower mainland all lined up, before anyone in the interior even knew it was happening. At the Roundup



ALL-WEST
CRANE &
RIGGING LTD.

Phone: 250-249-5151
Cell: 250-983-9293

www.allwestcrane.com

CRANE & HAULING SERVICES





**LET OUR TEAM RAISE YOUR NEXT PROJECT
TO NEW HEIGHTS**

**SPECIALIZING IN ROUGH TERRAIN CRANES FOR THE
MINING & CONSTRUCTION INDUSTRY**

Featuring the
**130 Ton Rough
Terrain Crane**
- the largest RT in BC

With its support base now 150 strong, NIMG has grown significantly in the last five years, representing a wide range of businesses

Conference, we promoted our position that NIMG was there to assist mining companies in our region, and we presented our directory of businesses and services.”

With its support base now 150 strong, NIMG has grown significantly in the last five years, representing a wide range of businesses, including automation and communications companies, mineral

processing equipment and supplies businesses, construction companies, engineering firms and consulting geologists. Each year, the Group publishes a Directory and Suppliers Guide. The “who’s who” of businesses providing services and products to the mining industry has become an important reference book and illustrates the scope of the region’s service/supply network. The

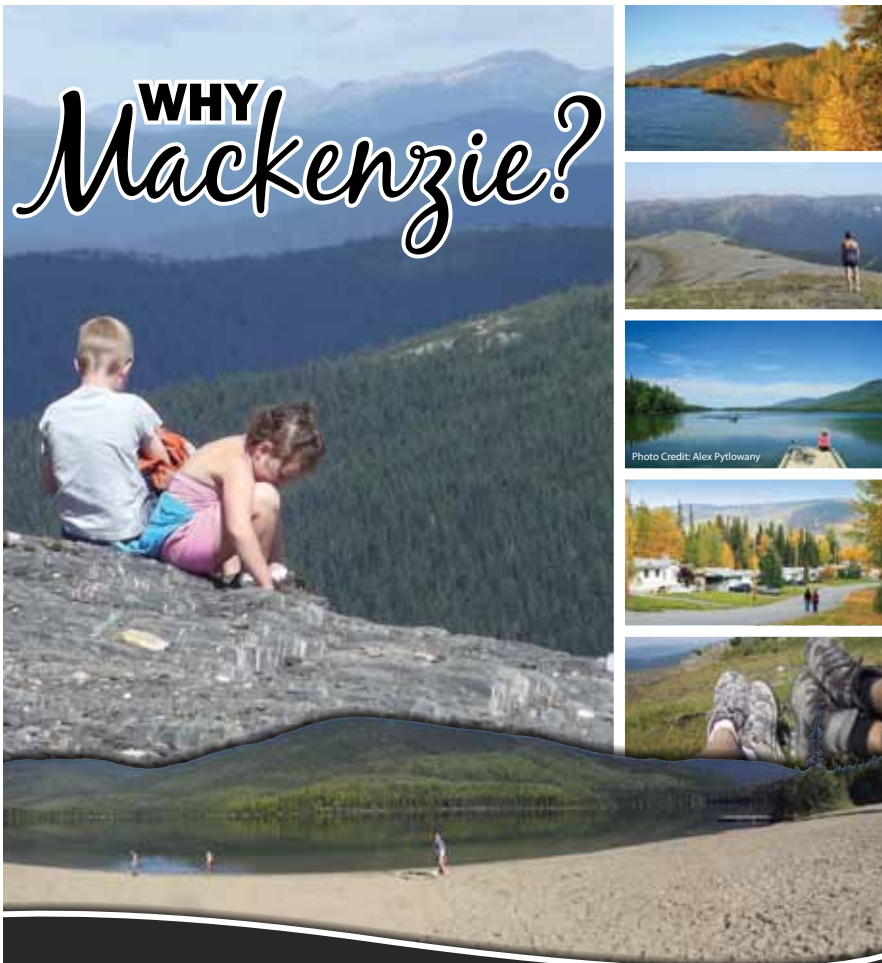
directory is distributed to participating members, is posted on NIMG’s website and is also made available at conferences and trade shows such as the AME BC Mineral Exploration Roundup Conference, and the Minerals North Conference.

NIMG also hosts procurement events, with representatives from mining companies providing presentations to local service industries about what mining companies are looking for. The events help businesses to understand procurement processes as they pertain to mining, and they provide a forum where people can network, form relationships and explore new business opportunities.

“Very often, mining companies develop relationships with their service companies because they want to know who they are dealing with and have confidence in them,” Forshaw says. “Mining companies can appreciate that it’s better to have people who know the area where they have their projects and, by supporting local services, they will be accepted better in those communities. NIMG is trying to open doors both ways, to help mining companies and service businesses to build these relationships.”

While NIMG’s initial focus was on the mining industry, the Group has expanded its mandate to encompass all resource-based industries, including oil and gas, forestry and large-scale energy projects. Knowledge, skills and expertise that are transferable from one industry to another meet the needs of companies requiring goods and services and foster the long-term viability and success of businesses serving those sectors.

“We’re seeing a shifting of gears, with companies providing goods and services to the mining industry, rather than saw mills,” Deacon says. “Businesses always need to be flexible and adaptable, to lend their expertise to other sectors. With commodity-based industries, when prices for certain commodities change, the supply chain will have to also change and adapt.” ●



WHY Mackenzie?

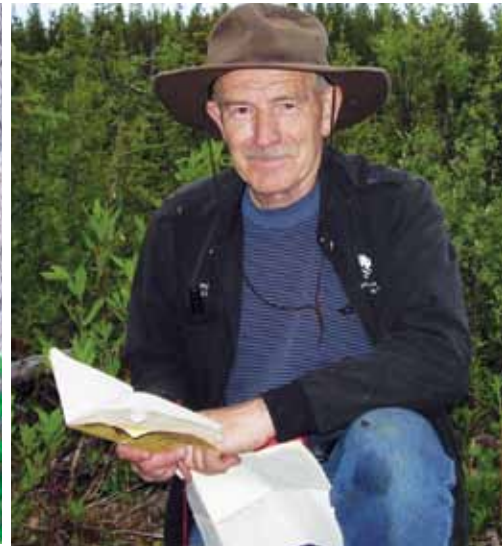
**Quality infrastructure supporting industry
Surrounded by world class year-round recreation
Community openly welcomes new industries,
businesses, residents & visitors**

DIANE SMITH Economic Development Officer
DISTRICT OF MACKENZIE

PH 250.997.3221 | FX 250.997.5186 | diane@district.mackenzie.bc.ca | www.district.mackenzie.bc.ca

VETERAN PROSPECTOR DAVE FORSHAW SHARES HIS PASSION FOR GEOLOGY

By Lisa Fattori



For most of his life, Dave Forshaw has been passionate about prospecting. It's a pastime that has enabled him to indulge in his love of geology while providing him with the opportunity to explore the outdoors and enjoy the wondrous plant and animal life of B.C.'s northern interior. The retired millwright still manages to find time for prospecting and continues to be an ardent cheerleader of the local mining industry.

As a boy, Forshaw accompanied his grandfathers, father and uncles on prospecting excursions. But it wasn't until settling in Mackenzie in 1972 that he got serious about prospecting. "They'd take me out with them, but it took time for the love of geology and prospecting to take hold," he says. "When I moved to Mackenzie, the area reminded me of my childhood and I started looking for placer gold. I learned where new logging roads were being built and would go and see what they may have uncovered."

In 1985, while on a family camping trip at Moose Creek, Forshaw cleared brush and dug a fire pit, only to discover that the gravel contained gold, as well

as three pieces of silver, which is very rare in placer mining. With the exciting find, Forshaw and his father staked a claim and worked the area for seven years.

Today, Forshaw owns three mineral properties with nine claims and has some older claims in southern B.C. with surface rights. He has sold to junior mining companies and, nine years ago, founded Moose Creek Minerals Ltd., a company that's a family affair, with involvement from Forshaw's wife and children.

As a councillor for the District of Mackenzie, Forshaw has been very active in helping local businesses benefit from the mining boom occurring in the region. "Mackenzie experienced a serious economic downturn because it was so focused on forestry," he says. "I felt we needed to get Mackenzie more involved in the mining industry. Cardero Coal, for example, will be barging coal to Mackenzie, where it will then be sent by rail to Prince Rupert. It will take one and a half years to build tugs and barges and will require about 600 people working on the project."

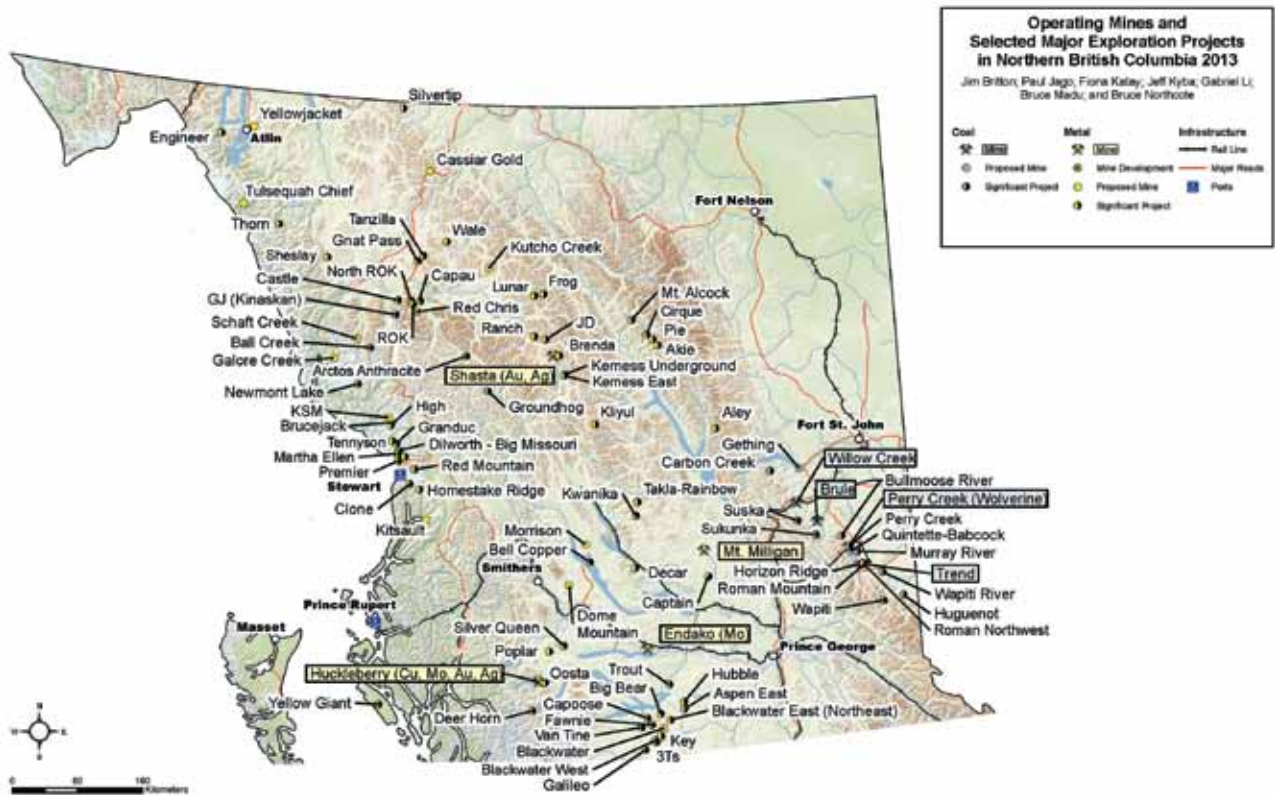
In 2008, Forshaw assisted in forming the Northern Interior Mining Group (NIMG) to help connect local businesses with the mining industry. He was president of the group for the next four years.

Forshaw has also been an active participant in a mentoring organization called the Omineca Exploration Group, which began in 1996. Run by Forshaw and five other prospectors in the Mackenzie area, the Omineca Exploration Group periodically offers courses about prospecting, covering such topics as placer mining and how to take soil, silt and water samples. Approximately 500 people have benefitted from the group's first and second level courses.

"We're generally a pretty secretive group, but it's important that prospectors work together," he says. "Sometimes, if you have an idea you're working on, it's helpful to bring in another prospector who has more experience. I've both received and given help quite a bit. Your integrity and credibility are worth so much. It's important that you are trustworthy, and I try to pass on this message to new prospectors." ●

EXPLORATION AND MINING IN NORTHERN BRITISH COLUMBIA

Courtesy of the B.C. Ministry of Energy, Mines and Natural Gas, Regional Geologist Summaries, Exploration and Mining in British Columbia



NORTHEAST REGION

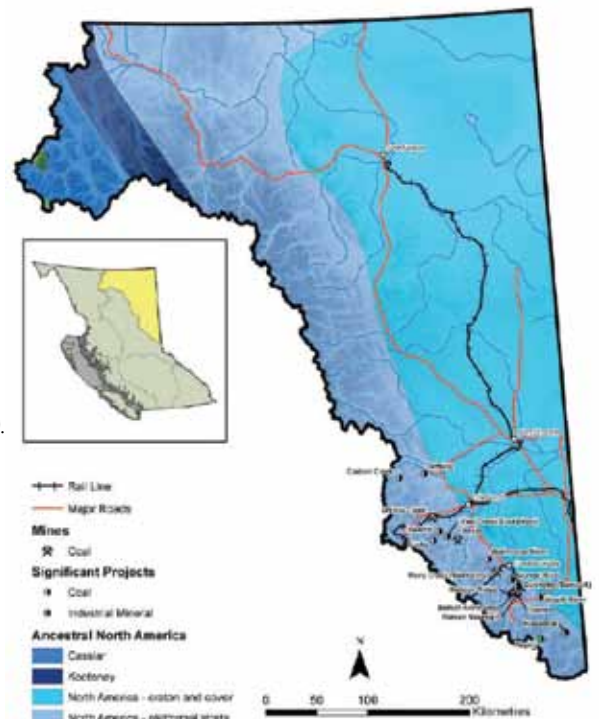
By C. Paul Jago, M.Sc., GIT, Regional Geologist, Prince George

2013 Exploration Highlights:

- Mines Act Permits issued for mines at Quintette-Babcock (Teck Resources Ltd) and Roman Mountain (Anglo American plc);
- start of a prefeasibility study at Sukunka (Glencore);
- completion of a PEA study for Huguenot (Colonial Coal International Corp);
- Federal Court decision and resumed work on Surface Facility development and bulk sample excavation at Murray River (HD Mining International Ltd);
- and drilling programs at Quintette-Babcock (Teck Resources Ltd); Roman Mountain and Roman Northwest (Anglo American plc); Sukunka (Glencore Canada Corp); Wapiti River (Canadian Dehua International Mines Group Inc).

Outlook for 2014 (speculative):

- Roman Mountain mine construction (phases 1 and 2);
- a production decision is expected at Quintette;
- some surface facility work may be done at Gething;
- mining phase 4B at Perry Creek;
- the northern extension at Brule mine is expected to start;
- excavation for a bulk sample will continue at Murray River.



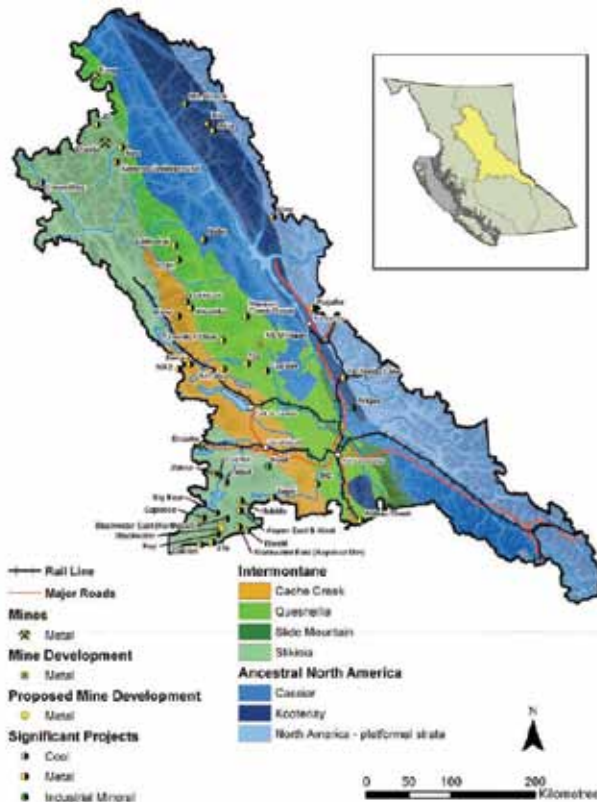
OMINECA REGION

By C. Paul Jago, M.Sc., GIT,
Regional Geologist, Prince
George

2013 Exploration

Highlights:

- Feasibility study completed for Kemess Underground (AuRico Gold Inc.);
- commencement of feasibility study for Blackwater (New Gold Inc.) and prefeasibility at Aley (Taseko Mines Ltd);
- positive PEA studies completed for Kwanika (Serengeti Resources Inc.), Decar (First Point Minerals Corp. and Cliffs Natural Resources Exploration Canada Inc.);
- updated resource estimates for Blackwater (New Gold Inc.), Decar (First Point Minerals Corp. and Cliffs Natural Resources Exploration Canada Inc.);
- drilling programs, here listed by targeted deposit-types)
 - Porphyry (copper-gold): Brenda (Canasil Resources Inc.), Captain (Orestone Mining Corp.), Kemess East (AuRico Gold Inc.), Takla-Rainbow (Manado Gold Corp)
 - low-sulfidation epithermal or vein (gold-silver): 3Ts (Independence Gold Corp.), Aspen East (Redhill Resources Corp.), Capoose (New Gold Inc.), Emma (New Gold Inc), Fawnie Regional (New Gold Inc.), JD (Tower Resources Ltd.)
 - SEDEX (zinc-lead-silver): Akie (Canada Zinc Metals Corp.), Cirque (Teck Resources Ltd.)



Outlook for 2014 (speculative):

- Thompson Creek Metals Co. Ltd will complete their first full year of production at the Mt. Milligan Mine in 2014, and final construction projects will be completed, including a permanent residence at the mine and rail load-out facility in Mackenzie.
- The Endako Mine will continue to optimize production activities and continue the Super-Pit expansion
- New Gold Inc. will complete the Blackwater feasibility study by the end of 2013 and will decide on the sequencing of the Blackwater and Rainy River projects.
- AuRico Gold Inc. will continue drilling at Kemess East to enhance the intrinsic value of the Kemess Underground project.
- Canada Zinc Metals Corp. and Teck Resources Ltd. will continue exploration for baritic SEDEX deposits in the Kechika Trough on their separate Akie and Cirque projects, and on joint venture projects.
- Cliffs Natural Resources Exploration Canada Inc. and First Point Minerals Corp. will begin prefeasibility level studies on the Baptiste deposit at Decar.
- Taseko Mines Ltd. will advance the Prefeasibility work at Aley.

I.F.S. Industrial
Forestry
Service Ltd.
www.industrialforestry.ca

Phone: 250.564.4115

1595 Fifth Avenue
Prince George, BC, V2L 3L9

OFFICE LOCATIONS

Prince George, BC (Head Office)
Vancouver, BC
Dawson Creek, BC
Ness Lake, BC

LAND MANAGEMENT

- Harvesting/Logging Supervision
- Reclamation Prescriptions & Plans
- Native Tree Species for Reclamation Programs/Nursery Services
- Timber Cruising, Valuation & Appraisals
- Cut Block Layout
- Visual Analysis
- GPS Traversing
- Permit Applications & Submissions
- Agency Liaison & Quality Control

ENGINEERING

- Road & Bridge Location & Survey
Conceptual Design & Cost
Estimates
- Road & Bridge Construction
Supervision
- Road Deactivation Prescriptions
- Terrain Stability Assessments
- Geotechnical Investigations

GEOMATICS

- GIS Mapping & Management
- Resource Inventory Mapping
- Digital Terrain Models
- Airphoto Acquisition & Management
- Aerial Surveys
- Electronic Submissions of Forest
Tenures & Permits

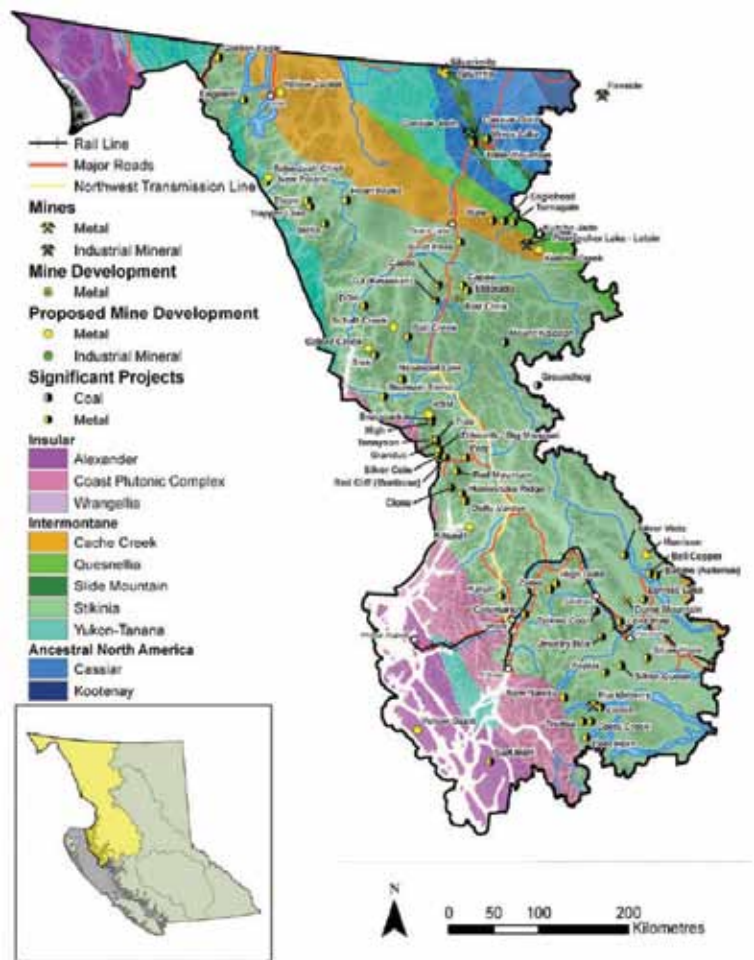


SKEENA REGION

By Jeff Kyba, B.Sc., GIT, Regional Geologist, Smithers

2013 Exploration Highlights:

- Imperial Metals Red Chris Mine is under full-scale construction, on budget and scheduled to be commissioned by May 2014
- Northwest transmission line construction continues aiming to meet the commissioning of Red Chris
- Colorado Resources discovers alkalic copper-gold porphyry system at North ROK, approximately 15 kilometres northwest of Red Chris
- Seabridge Gold confirms high-grade copper-gold core zone at the Kerr deposit at their KSM project and submits Environmental Assessment application package to government
 - Best intercept: 640 metres at 0.85 per cent Cu + 0.42 g/t Au
- Pretivm Resources discovers Cleopatra feeder vein at Brucejack
 - Drilling in 2013 intercepted 69 intervals grading over 1000 g/t Au
 - A feasibility study outlines probable reserves at 15.1 million tonnes grading 13.6 g/t Au + 11.0 g/t Ag from the valley of the Kings deposit
 - A 10,000-tonne underground bulk sample has been excavated with final results pending
- Banks Island Gold starts underground bulk sampling at Yellow Giant
- Gold Reach Resources intercepting best grades to date at the Ootsa Project
 - East Seel Drill hole S13-155: 160.0 metres at 0.44 per cent Cu + 0.53 g/t Au from 30-metre depth
- Copper Fox releases feasibility study for Schaft Creek: 940.8 million tonnes proven + probable reserves grading 0.27 per cent Cu + 0.0176 per cent mo + 0.19 g/t Au + 1.72 g/t Ag
- Teck Resources Ltd. Takes control of 75 per cent of Schaft Creek project and re-ignites exploration
- Chieftain Metals receives permits to begin construction at Tulsequah Chief Mine
- Avanti receives Environmental Assessment Certificate for their Kitsault molybdenum-silver mine



- Mining at Huckleberry continues as well as development of their Main Zone Optimization project
- High-ranking anthracite coal projects in the Bowser basin are moving towards an environmental assessment application at Arctos and mine evaluation at Groundhog.
- An unconformity has been identified that is at least spatially and temporally coincident with most significant metal mines in the Northwest
- BC Geological Survey initiates significant structural geology study north of Stewart

Outlook for 2014 (speculative):

- Mine construction at Red Chris and power line installation will inevitably change the social and industrial landscape in the Iskut – Dease Lake region. The mine will provide long-term, high-paying local jobs. The power line will serve as an icon of expanding infrastructure to a former infrastructure challenged region.
 - Exploration for satellite deposits will likely continue; some are underway and backed by major mining companies
- Coal mining will likely have an increased presence as Arctos approaches EA and Groundhog approaches bulk sampling
- Small-scale mining at the Yellow Giant may prove a method of mining
- BC Geological Survey continues to deliver publicly available high quality geoscience data and knowledge for various projects throughout the province ●



Accurate Mining Services Ltd.

- General Consulting
- Permit Applications
- Property Management

1311 Borregard Road
Quesnel, BC V2J 3Z7

Email: info@accurateminig.com Office: 250-747-2801
www.accurateminig.com Fax: 888-515-9204



Cambridge House
INTERNATIONAL

Hear from
investment
experts

Learn to
profit from
resources



Talk to
company
executives



Exploring the future of resources, together.

Annual Conference Listing:

Vancouver Resource Investment Conference | Vancouver, BC
California Investment Conference | Palm Springs, CA
Calgary Energy & Resource Investment Conference | Calgary, AB
World Resource Investment Conference | Vancouver, BC
Toronto Resource Investment Conference | Toronto, ON
The Silver Summit | Spokane, WA

Cambridge House International Inc.

Canada's premier investment conference company

cambridgehouse.com

1-877-363-3356

 CambridgeHouseConferences  Cambridge

PRINCE GEORGE: Service and Supply Hub for Region's Mining Industry

By Lisa Fattori

With the growth of the mining sector in B.C.'s northern interior, mining and exploration companies have come to rely on Prince George as a service and supply hub to support all of their operations. From construction and

trucking companies to consultants and engineering firms, Prince George offers the expertise to service not only mining companies, but also all resource development in the region. Five consecutive years of population growth

and an ideal climate for investment fuel the momentum of prosperity, providing Prince George with the critical mass necessary to keep pace with continued economic growth.

"Mining has become an incredibly important sector for Prince George," says Heather Oland, CEO of Initiatives Prince George. "In 2012, out of a labour force of 50,000 people, 1,100 worked directly in mining and exploration. As Prince George diversifies, the city becomes a hub for the supply, service and professionals that are needed in the mining, oil and gas industries. That diversity is what creates a sustainable economy."

According to Initiatives Prince George, in northern B.C., \$332.5 million was spent in mining exploration in 2011, which is an increase of 45.2 per cent from the previous year. Prince George businesses serving the mining sector have increased by 61.5 per cent over the past five years, while employment in mining has increased by an annual average of 54.3 per cent over the same period of time.

The Mt. Milligan copper-gold mine is a \$1.5 billion project slated to open this year. In 2012, 200 companies in north central B.C. worked on the project, which injected approximately \$125 million into the region. Of the permanent workers hired for the mine, 67 per cent are residents of the local region.

New Gold's Blackwater gold project, southwest of Prince George, is in an advanced exploration phase. The project has a capital cost of \$1.8 billion, with \$130 million spent in 2012 alone. Construction of the project is expected to generate 1,000 to 1,500 jobs in 2015.

Prince George currently has approximately 160 companies supplying products and services to the mining


PARKER PACIFIC
A member of The Inland Group

1995 Quinn Street, Prince George, BC
 Office: 250-562-8171 Toll Free: 1-888-552-5532



Call on us for all of your Mining and Support equipment needs.






PRINCE GEORGE . BC

GROWTH. OPPORTUNITY. INVESTMENT

Is your Prince George based supply and service company ready for growth?

Want to catch the attention of major project proponents in Northern BC?

List your company in the Initiatives Prince George Supply and Service Firms Directory.

For more information contact:
Initiatives Prince George
 Tel: 250.564.0282
 info@initiativespg.com
 www.initiativespg.com









industry, and that number is expected to grow as more projects come on stream. Active in the exploration, geotechnical, hydrology and environmental drilling sectors, Geotech Drilling has worked with Newmont Mining Corporation, Teck Resources and Copper Fox Metals, to name a few. Five years ago, the company employed less than 100 people and today has 170 employees and as many as 250+ employees for seasonal work in summer months.

“Geotech Drilling has grown exponentially, from a fleet of 16 drills in 2007 to its current fleet of 32 drills in 2013,” says Ryan Samis, Exploration-Division Manager for Geotech Drilling. “Our business model allows for diversification within the drilling industry, to move resources from sector to sector when one becomes stagnant or slow, which is common in the exploration and environmental divisions.”

Another Prince George-based company, Environmental Dynamics Inc. (EDI), has experienced tremendous growth, with mining and mining-related work accounting for over 30 per cent of EDI’s business, both at its Prince George office and across the company as a whole. EDI provides mining companies with natural resource consulting services throughout all phases of a mining project, from planning and construction to operation and closure. As a local company, EDI can offer mining companies scientific expertise, as well as guidance about the regulatory requirements of the region.

“Much of the environmental permitting in the region is done out of Prince George, and a part of our business includes acting as a liaison between the mining companies and regulators,” says Tim Antill, Senior Biologist for EDI. “We have very good professional relationships with people in the approval process and understand the issues in the area.”

Over the past three years, Prince George’s economy grew at nearly double the rate of the B.C. economy and recently received an improved ranking in the Real Estate Investment Network’s report, Top British Columbia Investment Towns. With both commercial and



RAMADA PRINCE GEORGE

True North Luxury

Traveling on your own or in a group, you’ll find the Ramada Hotel Downtown Prince George is your best choice for hospitality in the gateway to BC’s North. Facilities include a full range of rooms & suites, 2 grand Presidential Suites, indoor pool, whirlpool, fitness center, Business Center & WiFi. 8,000+ sq ft of the city’s best conference space, including our 4,400 sq ft ballroom, 4 additional meeting facilities and boardrooms. Refuel in Starbucks or enjoy our great pub fare in Coach’s Corner Sports Pub. Free covered parking with complimentary valet service.

444 George Street, Prince George, BC
T: 250.563.0055 www.ramadaprincegeorge.com



residential permits on the rise and a growing population to sustain an expanding workforce, Prince George is well poised to support increasing mining development in the region.

"Prince George already has the infrastructure, with transportation by air, road and rail and easy access to Port of Prince Rupert," Oland says. "The city has all of the amenities of a mid-size Canadian city, which attracts employment. If you're looking for good, stable employment opportunities and connections to the rest of the province, Prince George is a great place to live." ●



**SPOTLESS
UNIFORM**
AND LINEN SERVICE



The Service People
Since 1947

Coverall & Uniform Rental
Entrance Mat Service
Restaurant Linens - Camp Laundry Service
Towel Service - Fire Resistant Workwear
Hi visibility Workwear
Insulated Workwear

Ph: 250-962-6900 | Toll Free: 1-800-207-7756 | support@spotlessuniform.com

www.spotlessuniform.com

Northern B.C. - Central B.C. - Okanagan - Lower Mainland - Northern Alberta



CICCC LTD
CENTRAL INTERIOR CATERING
& CONSULTING LTD.

PHONE (250) 563-5332

FAX (250) 563-5363 | CELL (250) 961-6288

EMAIL natalie@cicamps.com

www.cicamps.com

570 3rd Avenue | Prince George, B.C. V2L 3C3

Portal
Installations LTD

The Overhead Door Specialists

Serving Northern BC for over 35 Years

*Sales, Service and Installation of Commercial and Residential
Overhead Doors and Electrical Operators*

250-564-9596

Fax (250) 564-2288 • 710 3rd Avenue, Prince George, BC V2L 3C5



Dean W. Simpson
Financial Advisor

Edward Jones

MAKING SENSE OF INVESTING

5111 Domano Blvd.
Prince George, BC V2N 5E1
Bus. 250-964-2353 Cell 250-640-8664
Fax 877-384-9267 TF. 855-295-9100
dean.simpson@edwardjones.com
www.edwardjones.com

Life Insurance Agent for Edward Jones Insurance Agency

WELCOME TO TERRACE, B.C.'S GATEWAY TO THE NORTH

By Jillian Mitchell



As resource demands continue to remain strong, it's boom time in many cities throughout the province. One such city is Terrace, situated between Kitimat and Prince Rupert along the Skeena River, an up-and-coming resource-based community garnering much attention as Northwest B.C.'s service and supply centre.

With a population of 18,787—and a regional trading area of more than 46,000—the City of Terrace is a growing local economy garnering provincial attention as a rural northern link that offers a great deal of opportunity for communication,

transportation and resource product trade in the province's resource sectors. Located at the junction of three major highways and the Canadian National Railway mainline, Terrace is poised to well serve the region's industrial activities and developments.

"Terrace has been a service centre for decades—and now it's in the spotlight," says Evan van Dyk, economic development officer for the City of Terrace. "We're seeing a lot of outside investors very interested in the region and we're seeing a lot of




RBC
Royal Bank

K.M. (Ken) Gebauer, FICB
Mining Service Industry Specialist
Senior Account Manager
Commercial Financial Services

Tel: 250-960-4526
866-800-9688
Fax: 250-562-1171
Cell: 250-552-9424

Royal Bank Of Canada
2nd Floor, 550 Victoria Street
Prince George, BC V2L 2K1

ken.gebauer@rbc.com



JNJ ENTERPRISES
GOPHER MINI SERVICES
5032 Graham Avenue, Terrace, BC, V8G 1B4

303.5 Cat and KX018-4 Kubota
mini excavators with hydraulic thumbs

RC30 and RC50
rubber tracked skid steers

Five ton dump truck

Leave the shovel in the shed, call Gopher instead

Phone: 250.635.4858 | Fax: 250.635.4858 | Cell: 250.615.7011



resource development and a surge in retail development – all of the box stores that you used to have to drive to Prince George for. It's an investment that was long overdue, so we're very excited."

The city is also the main junction

connecting Canada's Pacific Northern ports to the B.C. interior and the Prairies. Another major industry perk, the city is in close proximity to three deep-water ports: Kitimat, Stewart and the newly up-and-running Prince Rupert

port Container, the main source of the COSCO Shipping Line.

"Terrace is situated between two municipalities both right along the water, which are very integral in exporting, and in Prince Rupert's case, importing," says van Dyk. "Northwest B.C. will essentially be an important link to the Asian-specific market; it's about two days closer from Prince Rupert to Asian-specific ports than any other port in North America."

Over \$60 billion in major projects and investment opportunities are projected for the province's northwest region. As the city economic development officer suggests, the City of Terrace and the Northwest region are well-positioned to take advantage of the expected billions of dollars of mining development, citing the development of the Northwest Transmission line, which connects mines in the area to clean hydro energy as opposed to diesel energy, as an integral regional development.

"Mining plays a big part in the local economy and we're seeing a resurgence in the area because of this infrastructure upgrade," he says. "Right now, there are 89 exploration sites in northwest B.C., so we're likely to see decades of prosperity in the mining industry."

The regional retail and service hub nestled in the Skeena Valley is undoubtedly characteristic of British Columbia—with a rich hybrid of coastal-interior rainforest, a humid

**VILLAGE OF
BURNS
LAKE**





Explore Unearthed Opportunities
Ph: 250-692-7587

www.burnslake.ca | E: village@burnslake.ca



QSP Packers, LLC
Quality - Service - Price

Serving Your Complete Packer Needs

- ◆ **INFLATABLE PACKERS:**
Wireline, Straddle Systems for Permeability Testing, Pressure Grout, Environmental Well and Water Well
- ◆ **MECHANICAL PACKERS**

Contact **QSP** with all your Packer questions!!
Mark Hartley & Ron Roland - Sales, Production & Technical

Toll-Free: **1-888-5Packer** or **253-770-0315**
Fax #: **253-770-0327**
Email: info@QSPPackers.com
Web: www.QSPPackers.com




Prompt Shipping in US & International - Usually in just One Day!



continental climate, and majestic flat mountain ranges (traditionally known as Ganeeks Laxha, which in the Tsimshian language translates to “the stairway to heaven”)—making it an attractive choice for resource workers and their families relocating to the area for employment opportunities.

Accordingly, Mayor David Pernarowski is pleased with the direction the city is headed. As the mayor reports, the city is focused on diversifying its offerings and strategically preparing for an anticipated population increase sparked by the ongoing resource boom.

“Terrace has been a service centre for a number of years. We’ve redefined ourselves, to a certain degree, to make sure that we have set ourselves up here to be able to accommodate all of the projects developing around the region.”

“Our relationship with the mining industry is strong and we recognize the importance of the exploration that has been happening in the region over the past few years. Mining has always been a key component to that diversification, and we have taken a lead role in making sure that our city is prepared.”

¹ Population includes City of Terrace and District. Population for the surrounding area garnered from census data for Kitimat, Rupert, Nass Valley, and up Highway 37 and their respective surrounding areas. ●



NORTHERN STEEL LTD.

Celebrating Over 35 Years of Steel Fabrication

Supporting the Mining Industry since 1977 with:

- Shovel, dipper stick and truck box relining and refurbishment
- Custom fabrication of process mining equipment
- Fully outfitted CNC machine shop with robotic welding cell
- Tanks, pressure vessels and platework
- Hardplate liners, overlays, and exotic materials for high-wear applications
- OEM refurbishing and rebuilding
- Sandblasting and painting facilities
- Engineering and design, 3D modelling and detailing
- Mine maintenance program assistance and inventory services
- Site services and turnkey support

- 40,000 ft² shop •
- 70 ton overhead crane capacity •
- 32 ft under hook •

• ISO 9001 • CWB Div 2.1 • API 650/620 •

• CSA-B51 • ASME Sec VIII Div 1 •

Quality & Service is Our Business



NORTHERN STEEL LTD
 9588 Milwaukee Way | Prince George, B.C. | V2N 5T3
 P: (250) 561.1121 | F: (250) 561.0954 | E: main@northernsteelltd.com

www.northernsteelltd.com

FORESTRY'S FINEST BRANCHING OUT

Kim Forest Management Willing and Ready to Service B.C.'s Mining Sector

By Jillian Mitchell



Next on David Kim's to-do list is a plan for diversification—into the mining sector. And the president of Prince George-based Kim Forest Management Ltd. (KFM) is thanking his lucky stars that so many of his company's services are transferable.

It's a strategic move that Kim deems necessary as a means to diversify and keep current with the region's demands.

"There are a huge number of mining projects that have been identified for northern B.C. in the upcoming decade," Kim says, "and we look forward to being an integral part of the land management process for those projects."

The SAFE-certified company founded on a "strong sense of ethics and integrity" takes pride in staying current with

the most innovative, up-to-date technology and techniques in their field. Specifically, the firm specializes in special-use permits, government-issued permits, forestry operations (land clearing, road locations, and boundary locations), timber evaluation, ecosystem surveys, and GIS services—all of which are transferrable to the mining sector—among other technical services including silviculture surveys, forest road and cutblock development, forest road construction supervisions, timber cruising, ecosystem classification, and forest health surveys.

In an effort to successfully diversify, the KFM president joined the Northern Interior Mining Group (NIMG) in 2008 and opted for placement on the leadership group in 2009, a position



that he cites as a great method of “learning the ins and outs of the mining industry.” For the entrepreneur rooted in forestry, the group has been “valuable when getting to know other companies and looking for synergies.”

Hailing from Toronto, Kim and his wife, Stephanie, relocated to Prince George in 1993. Four years later, and with two children in tow, Kim’s vision of owning a forestry management business quickly became a reality. Though KFM comes from humble beginnings—as a three-man operation in the family’s basement—today, the company is armed with a staff of 19, their own building, and a reputation as one of the industry’s best.

“I came to B.C., specifically Prince George, as a university student to tree plant,” says the registered professional forester and co-author of Non-Replaceable Forest License Management—Understanding the Basics, a Ministry of Forests and Range handbook. “During that time, I saw this community as a strong hub for forestry and just knew it was the right place to start my career as a professional forester.”

Servicing northern B.C., KFM manages many projects while adhering to fundamental ecological principles, which are economically sound and time efficient. A company highlight, KFM has been instrumental in working with three First Nations

bands in the Mackenzie District on their non-replaceable forest license, which the group signed off on in January—a five-year process that Kim takes great pride in. Ultimately, it is the hope of the KFM president to foster comparable success stories in the mining industry as well.

“The way we see it, it’s a matter of tweaking our skills to suit a new industry’s needs,” he says, “and it is my hope and my vision that KFM will branch out and be able to service the mining sector in a greater way.” ●



Ph 250.847-4226 | Fax 250.847.3731
Toll Free: 1.800.663.3120

Box 3418, Smithers, B.C. V0J 2N0 | email: caprimithers@citywest.ca

www.caprimotorinnsmithers.com

805 - 4th Avenue
Prince George, BC V2L 3H5
Tel: (250) 564-3808
Fax: (250) 564-4427 | Email: info@kfm.ca
www.kfm.ca



Quality | Service | Innovation | Professionalism | Commitment

 <p style="text-align: center; font-weight: bold; color: white; background-color: #4CAF50; padding: 2px;">LAND AND RESOURCE MANAGEMENT</p> <ul style="list-style-type: none"> Forest Tenure Administration Forest Stewardship Plan Development Encumbrance Checks Resource Road Construction Projects Permit Application and Facilitation with Government Agencies Audits and Reporting 	  <p style="text-align: center; font-weight: bold; color: white; background-color: #4CAF50; padding: 2px;">FIELD SERVICES</p> <ul style="list-style-type: none"> Contract Implementation/Administration Multi-phase Timber Development Ecological Field Assessments Resource Road Construction Supervision Logging Supervision Riparian Assessment and Prescriptions Silviculture Strategies, Prescriptions and Surveys
<p style="text-align: center; font-weight: bold; color: white; background-color: #4CAF50; padding: 2px;">DATA MANAGEMENT</p> <ul style="list-style-type: none"> GIS Analysis/Mapping Remote Sensing (LiDAR) Research and Development FTA and RESULTS Reporting 	



FINDING A MIDDLE GROUND: B.C. colleges working together with BC AMTA to fill the industry labour void

By Jillian Mitchell

The facts are well-understood—B.C.'s mineral exploration, development and mining industry is expected to see a major labour void by 2022.

Prepared to fill the anticipated 13,000-plus placements is Northwest

Community College (NWCC), the College of New Caledonia (CNC) and the BC Aboriginal Mine Training Association (BC AMTA). Their strategy?

Meeting prospective workers where they're at.

"It's about how we can get students from where they are at to where they need to be," explains Danielle Smyth, projects administrator for NWCC's School of Exploration & Mining. "There are incredible barriers that people are facing prior to employment. One of the biggest directions we've moved in is being responsive and customizing our training to the needs of industry. By doing this I think we set our students up for success."

NWCC and CNC are two local educational institutions located in northern B.C. preparing students for future employment opportunities in the mining sector. As such, a wide range of programs relative to the mining industry—from trades, to business programs, to work-place-based safety training—are available through the colleges and their respective trades departments. Many of the tuition-based programs are shorter in duration (i.e. six to 12 weeks) and are geared towards a

specification: drill core technicians, prospectors, field assistants, environmental monitors and mineral processing operators.

At NWCC, students are prepared for realistic work environments in the seven-week Workforce Exploration Skills Training (WEST) program. NWCC's School of Exploration and Mining also delivers a two-week Surface Diamond Driller Helper course, a Drill Core Technician Basic Training program and a Mining Exploration Field Assistant Training program. A new 14-week Mineral Processing Operator program has also been developed through a partnership between Northwest Community College and local industry partners. The most popular program at CNC is a 16-week Mining Industry Certificate program, which prepares workers for entry level jobs in the mining industry.

To date, both schools have experienced high success rates—more than 80 percent of graduates have gone on to procure sustainable employment in B.C.'s mining sector. Fundamental to this success rate, says Randall Heidt, executive director for External Relations at CNC, is "regular meetings with industry, the Canadian Institute for Mining and other post-secondary institutions to discuss current and upcoming needs and trends in the mining industry."

"Programs associated with mining, such as welding, carpentry, electrical, machinist millwright, heavy duty mechanic and the mining certificate program are usually operating at full capacity," Heidt confirms. "In some cases we do have waitlists and when possible we will add a class section if there is enough demand. For example, we recently added an afternoon class of heavy duty mechanics to help students who were on a waitlist. The majority of students in these areas are in high demand, with many receiving job offers even before they have completed the programs or apprenticeships."

As both Heidt and Smyth agree, often the biggest barriers students face is tuition. Because these mining-based programs



tend to be short-term offerings, they don't always qualify for provincial and federal student loans. As an alternative, the government has recently developed the B.C. Access Grant, a \$6,500 grant targeted towards skills training in eligible programs 12 weeks or longer. Another government-funded program has been the six-week Workforce Exploration Skills-Training program, which in 2013 was funded through the Canada-British Columbia Labour Market Agreement. The future of this funding source, however, is uncertain as the Federal government has proposed a change in the structure.

The mining industry is also the largest private-sector employer of First Nations in Canada—over 150 First Nations bands are represented in the industry, 122 of which are B.C.-based. Rounding out the labour-shortage initiative, working closely with NWCC and CNC, is BC AMTA. As the association's mandate confirms, the goal is to foster industry connection, educational support, and cultural understanding amid the mining sector.

"As an organization—and as individuals—we foster relationships between educators and First Nations, and we make sure we provide solutions for all sides," says BC AMTA CEO, Laurie Sterritt. "The result is companies get the trained, confident workers they need and the economic health of the First Nations increase dramatically. One person at a time, we know we're generating a lot of value in the communities."

Approximately 61 per cent of the 561 BC AMTA candidates currently working in the province's mining sector transitioned from unemployment—a percentage that Sterritt finds very encouraging. Cornerstones of the BC AMTA program are program coaches who offer pre- and post-training assistance

to individuals and the association's own Pathways to Success program that focuses on the correlation between life skills and technical training.

"There's some real teamwork happening (between the different institutions) and we realize that we all have our strengths," she says of the collaborative approach. "And we're working together to make sure the industries and the communities get what they need. There's a real educational piece for all sides so we can bring the traditional knowledge and different approaches. It makes a lot of sense to build relationships and work together."

Since 2008, the Canadian government has provided funding to support B.C. labour market programs through the Canada-British Columbia Labour Market Agreement. ●

TRIPLE K SAFETY INC.
MEDICAL, SAFETY & SECURITY SERVICES




P.O. Box 1531
Tumbler Ridge, BC
V0C 2W0

Office: (250) 242-5033
Cell: (250) 263-4871
Fax: (250) 242-5036
tripleksafety@pris.ca

College of New Caledonia
Mining Industry Certificate

Designed in response to address the impending labour shortage issue in the mining industry, the Mining Industry Certificate (MINE) program will be able to provide industry with skilled, knowledgeable, and experienced potential hires.



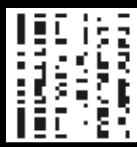
More Trades courses at CNC
Check out all of our campus pages for full listings

<ul style="list-style-type: none"> Autobody Repair (Motor Vehicle Body Repair) Automotive Technician Carpentry Confined Space Awareness Electrical Heavy Duty / Commercial Transport Heavy Equipment Operator 	<ul style="list-style-type: none"> Industrial Mechanic (Millwright) Mineral Processing Operator Plumbing Power Engineering Professional Cook Welding Level A & B Welding Level C and more!
--	---

CNC serves the residents of Northern BC. Campuses are located in Burns Lake, Fort St. James, Mackenzie, Prince George, Quesnel and Vanderhoof.

**College of
New Caledonia**
www.cnc.bc.ca

S





MAKING IT HAPPEN: One Woman's Tale of Fortitude and Perseverance

By Melanie Franner

Ellen Clements keenly wants to fulfill one of her late husband's longtime dreams.

But a prolonged legal battle over development of a promising copper, molybdenum and gold porphyry deposit located approximately 30 kilometres south of Houston, B.C., is making the mining company's executive's life difficult.

As president and CEO of New Nadina Explorations Ltd. and Kettle River Resources Ltd., Clements is dealing with the recent

decision from the Surface Rights Board of British Columbia (SRBBC) to see if New Nadina can finally develop the 100-year-old Silver Queen property – the property her late husband, George Stewart, first drilled back in 1969 and believed held such potential.

Earlier this year, the SRB announced its decision that the Main Meadow was "land under cultivation" and, as such, is presently subject to cultivation activities for the purpose of harvesting a

FORT ST JAMES
DISTRICT

End of the Road, Start of Your Project

We are located conveniently in North Central BC to facilitate your operations to remote sites while providing the amenities you need to get the job done.

Contact the Fort St. James Economic Development Office to learn more:
250-996-8233
edo@fortstjames.ca

- ▶ Experienced, professional service providers for your environmental, earth works, first aid, construction, and service needs.
- ▶ Hotel and motel accommodations, truck shops and skilled labour force.
- ▶ Well connected through technology, local airport, highway and CN Railway.
- ▶ Local CNC courses in Mining Certification, Mineral Processing Operator, Environmental Field Assistant and more.

www.fortstjames.ca/economic-development

WESCO

Kitimat - Prince George - Kamloops

Your Northern Source for Mining, Oil and Gas Industries

WESCO is a leading distributor of electrical construction products and electrical and industrial maintenance, repair and operating supplies. WESCO is more than just a distributor. We are a company that is market-focused, customer-driven, and solution-savvy, striving to deliver value, service, and results that exceed customer expectations. We are your partner in business.

Electrical Solutions for Harsh & Hazardous Environments

www.wesco.ca

Kitimat Tel # 250-632-6384 • Prince George Tel # 250-562-3306 • Kamloops Tel #250-374-2112

TGC CONSULTING LTD.
(TECH GROUP CANADA)

Team of Technicians
Providing Structural Steel Fabrication
and Erection Drawings Since 1993
Utilizing the Latest 3D Technology

Lake Country, BC
PH: (250) 766-4110
Email: admin@tgconsulting.com
www.tgconsulting.com

crop and therefore not subject to right of entry for exploration purposes. The SRB, however, stated that once the seasonal opportunity to harvest or pasture a crop has passed, the land is no longer considered "land under cultivation", at least until such time as cultivation activities for the purpose of raising and harvesting or pasturing a crop begin again the following season.

This means New Nadina will have access to these areas after the crop is harvested or once the time has lapsed to harvest, as well as in early fall and winter.

The SRB clarification is largely consistent with and confirms previous court rulings. A previous attempt made in November 2012 by the surface rights holders (C. Donald Christmann and 0712249 B.C. Ltd.) to deny the Company access to its Silver Queen property failed and was dismissed by the Supreme Court of British Columbia.

The SRB's recent decision finally puts to bed the latest in a series of legal tussles that pit Clements and New Nadina Exploration's directors against the Silver Queen's landowner.

The problems began when New Nadina first discovered the "Itsit" deposit on the Silver Queen property back in September 2011.

Clements' doggedly pursuit of the Itsit deposit is the culmination of her late husband's dream. Within a year's time of Stewart's death in 2005, at the urging of the Corporate Directors, Clements accepted the role as President and CEO of



New Nadina Explorations and Kettle River Resources. Her primary focus soon became the Silver Queen mining property, of which the mineral rights were 100 per cent owned by New Nadina Explorations. (The company also owns a joint venture project called the Monument Diamond Project in Lac de Gras, Northwest Territories, with partners Stewart Blusson and Chris and Jeannie Jennings, while Kettle River Resources owns a large portfolio of land and mineral claims in the area of Greenwood, B.C., as well as a 43.37 per cent stake in DHK Diamonds.)

"Stewart first drilled the Silver Queen property in 1969 while pursuing a porphyry for Kennco. Due to economics of the day he was told not to drill deeper than 250 feet," says Clements, who adds that Stewart's diaries revealed his belief in a potentially big find. "I didn't realize the depth of his convictions until after he died. When I took over the property, my mission was to either fulfill or kill his dream."

The recent SRB's decision will now allow Clements to continue to pursue Stewart's dream. She hopes to accomplish this by finding a joint venture partner to help develop the underground vein resource, find the higher-grade gold zone or determine where the deposit comes close enough to the surface as to make it economically viable.

"I thought making the discovery would be the hardest part and that the rest would be easy," concludes Clements. "I have to do the best I can - stay with my loyalties and dedication to this company and its shareholders. If I die trying, I will be doing what I was meant to do." ●



- ▶ Unlimited Data Transfer
- ▶ No FAP or monthly average charges
- ▶ Unlimited phone calls, no per minute charges
- ▶ Data rates of up to 5100 kbps download
- ▶ Content Management
- ▶ Advanced long range wireless networks
- ▶ Advanced user management

**THE BEST PRICES
ON LARGE SATELLITE NETWORKS
IN CANADA**

WWW.STARLYNX.CA

Chris Mosimann
Starlynx Communications
cpm@starlynx.ca

1080 Main Street
Smithers B.C. V0J 2N0
Ph: 250-877-7746



New Nadina Explorations Limited TSX-V:NNA
www.nadina.com • ph. 1-800-856-3966

OCTOBER 2011
PORPHYRY DISCOVERED AT SILVER QUEEN
OWEN LAKE, SOUTH OF HOUSTON BC
'ITSIT' DEPOSIT



DDH 11S-13 (H core)
22cm 172.6-172.62m

Assay: Mo 3.9%, Cu 0.179%

At least one hidden treasure at the Silver Queen has been found. Using new geo-physics and tenacious perseverance Ellen Clements and her team have targeted and successfully drilled into the copper, molybdenum and gold "Itsit" deposit. Coupled with the 22 known lead, zinc, silver, gold veins, exploration takes a new focus.

With less than a dozen drills holes, this large porphyry is still in early exploration stages. Recent Surface Rights Board confirmation (Sept 2013) of exploration rights to access and explore private property will allow further drilling to take place. The next drill program is designed to test the 'closer to surface' areas of the anomaly. Maps and information related to the Silver Queen property can be accessed on the website: www.nadina.com

AWARD-WINNING RECLAMATION WORK ONGOING AT KEMESS SOUTH

By Leonard Melman

The Kemess South Mine has been one of British Columbia mining's most important stories for many years and even though it has ceased active operation, it continues to generate substantial interest as a result of its world-class reclamation work.

Kemess South is located in North Central B.C., about 280 kilometres by air north of Smithers or about 300 kilometres northwest of Mackenzie. It is also directly south of the Kemess North project now under development by AuRico Gold, owner of both properties.

Following years of exploration, development and the construction of production facilities, the mine was put into operation by previous owner Royal Oak Mines in 1998. Northgate Minerals took over the mine in 1999 and continued active operations through 2011. At its peak, the Kemess South Mine was a truly substantial operation with a mining rate of 150,000 tonnes per day and total production figures during the life of the mine amounting to approximately three million ounces of gold and 800 million pounds of copper.

Given the enormous size of the Kemess South Mine, upon closure it was faced with a significant reclamation problem. Fortunately, all of this was foreseen as early as the initiation of production and a detailed reclamation plan was set into motion, designed for completion by the year 2014. Three specific areas of restoration were addressed including the open-pit mine area; the waste-rock dump tailing storage and the area used during actual milling. These areas covered approximately 675 hectares.

Another target of importance is well-named "borrow areas", which are regions where material was "borrowed" for use for a specific purpose elsewhere such as the construction of dam tailings facilities. Reclamation of these areas was also addressed in the Kemess South plan.

The general guiding philosophy in the development of the Kemess South reclamation plan was to adopt those measures which would best facilitate natural processes, ultimately leading to self-sustaining ecosystems. One very important component of that concept was altering surfaces which had been smoothed during various mining operations back toward natural, rough



ACCESS

SUSTAINABLE SOLUTIONS FOR RESOURCE DEVELOPMENT
www.accessconsulting.ca

SERVICES INCLUDE:

Public Consultation	Environmental Training
GIS/Cartographic Services	Spill Response & Clean-up
Geochemical Characterization	Environmental Management
Fisheries Resource Management	Baseline Environmental Studies
Environmental & Compliance Audits	Management of Abandoned Mine Sites
Environmental Impact & Risk Assessment	Mine Closure & Decommissioning Planning
Contaminated Site Investigation	Site Assessment & Remediation
Environmental Effects Monitoring (EEM) Management	Project Permitting & Licencing (eg. YESAB, YWB)
Water Treatment System Design & Operation	

E-mail: admin@accessconsulting.ca
 Telephone: (867) 668-6463 Fax: (867) 633-4882

A Member of Alexco Environmental Group & a wholly owned subsidiary of Alexco Resource Corp. TSX: AXR NYSE-AMEX:AXU



YOUR OFF-ROAD ADVENTURE JUST GOT ROOMIER



XUV 855D S4
From \$ 16,999

ENGINEERING VS. THE REAL WORLD

- 4-passenger capacity
- 23hp* diesel, 32 MPH (52km/h)
- 854cc, 3 cylinders, OHV

CONFIDENCE VS. TERRAIN

- 50hp* EFI, 44 MPH (71 km/h)
- 812cc, 3 cylinders, DOHC



XUV 825i S4
From \$15,999

NR MOTORS LTD.
 805 1ST AVE PRINCE GEORGE, BC
 250-563-8891 1-800-563-8893
www.nrmotors.ca

The choice of seeds to be used in reclamation was very important and consultations were held with nearby first nations, resulting in a native-seed collection program.

surfaces which would then be much more amenable to seeding and replanting operations. Seeds which might be unable to take hold on smooth surfaces and then be either washed away or scattered by wind would be much more likely to germinate in rough soil.

The choice of seeds to be used in reclamation was very important and consultations were held with nearby first nations, resulting in a native-seed collection program. Among the most popular seeds collected were lodgepole pine; arctic lupine; altai fescue and fireweed. These seeds - and others - were gathered at Kemess South for initial propagation trials and eventual widespread planting programs.

Reclamation work on tailings dams included resloping the contour of sand buttresses to ensure they drained away from drainage crests and the application of principles noted earlier such as developing rough surfaces in former tailings areas to assist in the growth of native vegetation and the development of native wildlife habitat. By early 2010 it was observed that seedlings were doing well and native vegetation had started to re-appear in these areas.

These work programs, both extensive and intensive, have not gone unnoticed by the environmental community and in

2011 previous owner/operator Northgate Minerals won the prestigious "British Columbia Jake McDonald Mine Reclamation Award" for their work at Kemess South. Since the award trophy contains a 20-pound chunk of Jade, it is also known as the "Jade Award."

In a report on the award presentation, Environmental Scientist Jennifer McConnachie commented, "...Achieving the Jade Award is evidence that the Kemess South Mine will go forward as a benchmark for the broader realm of mine reclamation in British Columbia." ●

KPMG
cutting through complexity

KPMG's Mining practice
Working with you to achieve success.

Prince George	250-563-7151
Vanderhoof	250-567-5267
Quesnel	250-992-5547
Fort St. John	250-271-0229
Toll free	1-800-665-5595

kpmg.ca

Extraction is only the Beginning

Complete your project. 

EDI Environmental Dynamics Inc. Site Reclamation Services.

 **EDI**
ENVIRONMENTAL DYNAMICS INC.
Dynamic People | Practical Science | Effective Results



edynamics.com
1.866.562.5412

Whitehorse Grande Prairie Vancouver Nanaimo Prince George

OUTSIDE THE BOX

Northern Thunderbird Air is B.C. And Yukon's First-Choice Remote Airstrip Professional

By Jillian Mitchell



The remote areas of British Columbia offer some of the most challenging flying conditions in the world—rugged terrain, temperamental weather and limited aviation infrastructure. Confidently servicing these hard-to-get-to places is Northern Thunderbird Air (NT Air), a company that cites unimproved airstrips with difficult access as their niche. It's a natural fit for servicing the mining industry, and the company has been shifting its focus to do just that for the past 15 years.

"NT Air has been and continues to be the premier air carrier for both mineral-exploration companies and operating mines," says general manager Mike Harris, who joined the NT Air team in 2000 as an aspiring pilot. "We pride ourselves in serving all aviation-related aspects for the mining industry, including offering consultation services to companies looking to develop an air-service plan."

As "thinking and delivering outside the box is what [they] do best" (according to the company's slogan), NT Air is always keenly on the lookout to increase its diversity of clients and is successfully doing that right now, as illustrated by additional business relationships with clients in the areas of medical evacuations, scheduled services, tourism, governmental entities, and corporate and personal charters.

A fleet of modern turbine aircraft, with 24-hour capability and remote-mountain-terrain expertise, make NT Air the cream of the crop when compared to similar airlines. Founded in 1971, the Prince George-based NT Air (an amalgamation of Northern Mountain Airlines, based in Fort St. James, and Thunderbird Airlines, based in Prince George) today celebrates 42 successful years of charter and scheduled services.

"Since its inception, Northern Thunderbird Air has ebbed and flowed with the times," says Harris. "In the ever-changing world of aviation, NT Air has proven its ability to adapt to new challenges, whether they are economical, technical or a customer's unique requirement."

Today, the company boasts eight aircraft, three British Columbia bases (Prince George, Smithers and Vancouver) and 50-plus employees—a significant progression from the operation's early beginnings with one aircraft, one base, two scheduled points and five employees. The firm is also the exclusive crew-change provider for numerous operating mines in B.C. and the Yukon.

As Harris suggests, diversity is a "strong and desirable attribute of NT Air that contributes to its long-term health and overall excellence." He is also quick to cite the company's unique combination of a dynamic team, unparalleled aircraft types, and the challenging flying environment they operate in as additional perks.

According to the general manager, the company's excellent track record can be attributed to strong leadership, passionate employees, superior aircraft, and a dedicated corporate commitment to safety and quality. Each of these long-view principles, says Harris, are high on the company's priority list as it goes forward.

"Northern Thunderbird Air will continue to adapt to the ever-changing aviation industry," he says. "NT Air aims to focus on ensuring the highest standard is maintained with existing operations while cautiously assessing opportunities for growth." ●

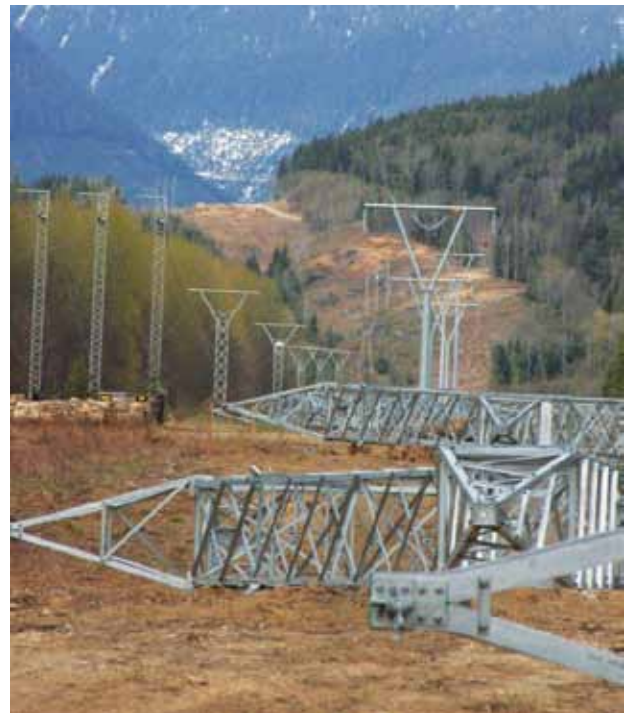
GOLDEN OPPORTUNITY

Northwest Transmission Line Opens Up Region for Development

By Jillian Mitchell



For the BC Hydro project team, the NTL project is a special one.



Northern British Columbia is colloquially known as the “Golden Triangle,” a moniker earned through the region’s 935-plus identified mineral occurrences and 25 exploration projects and proposed mine developments.

However, in the Triangle, all has not always been golden.

At times, the region’s lack of electrical transmission infrastructure has presented a barrier to its prosperous potential.

That is until now.

Supporting further economic growth is BC Hydro’s Northwest Transmission Line Project (NTL), now under construction. As the Crown Corporation’s largest project to date, the NTL is designed to facilitate a “robust northwest community” as an interconnection point for future industrial development and clean-power projects.

Approximately 344 kilometres of 287-kilovolt transmission line is being installed between Skeena Substation near Terrace and a new substation to be constructed north near Bob Quinn Lake, extending the transmission grid some 130 kilometres farther north than its current terminus at Meziadin Junction. The new line will also facilitate the reduction of greenhouse gas emissions through a complementary project (see sidebar) that will connect the town of Iskut (south of Dease Lake), which currently relies on diesel generation, to the electricity system.

For the BC Hydro project team, the NTL project is a special one. “It’s a very exciting project for us. That area of the province went through a real economic slump with the downturn in the forestry industry,” says Lesley Wood, senior stakeholder relations specialist at BC Hydro.

ISKUT EXTENSION AND PRINCE GEORGE/TERRACE CAPACITORS

BC Hydro is now working on two additional projects in northwest B.C. The first is the Iskut Extension project, which will effectively extend the NTL about 95 kilometres farther north. This project involves BC Hydro purchasing a transmission line currently under construction by Imperial Metals, between Bob Quinn (the planned terminus of the NTL) and a new substation that Hydro is building at Tatogga Lake. (Imperial Metals will be constructing the transmission line further still—to their Red Chris Mine site).

The transmission line and substation will be completed in 2014. From the new substation, BC Hydro will be building a 15-kilometre distribution line to the community of Iskut, which will allow Iskut to receive clean power from the electricity grid, starting in 2015. The project cost to BC Hydro is about \$130 million. Currently, Iskut relies on diesel generation, and supplying Iskut from the grid will reduce greenhouse gas emissions by about 2,800 tonnes per year.

The second project is the \$125-million Prince George to Terrace Capacitors Project. This project will significantly boost the ability of the 500-kilovolt transmission line between Prince George and Terrace to carry electricity. It involves constructing

three capacitor stations along the 450-kilometre length of the line.

“Think of a transmission line like a garden hose,” says Lesley Wood, senior stakeholder relations specialist at BC Hydro. “If you turn on the tap of a 25-foot garden hose, the water comes out the end with a certain pressure. Now, if you were to attach another 25-foot hose—so it’s now 50 feet long—and turn on the tap the same amount, you wouldn’t get as much water coming out the other end. The force behind decreases, the longer the hose.

“It’s the same with a transmission line,” Wood says. “The voltage drops as you get further and further away from the substation feeding the line. The capacitor station’s job is to boost the voltage, which then boosts the amount of electricity that can be carried.”

When the NTL comes into service, the nominal capacity of the line will be approximately 260 megawatts; however, when the Prince George to Terrace Capacitors Project is completed in 2018, the capacity can increase up to about 375 megawatts, resulting in the line’s ability to carry more electricity to power more industrial developments in northwest B.C.

“NTL will make a huge difference to these communities. Projects like this are built to support industry and industry means jobs—and jobs and wealth in this region of the province benefit the entire province. Working on the NTL is very rewarding for us because we see so clearly how the project is benefiting the area, and we’ve really appreciated the strong support the project’s received from local communities.”

A 2008 report released by the Mining Association of BC estimates that the line has the potential to bring in an additional \$15 billion in mining investment alone—creating up to 10,000 jobs and generating \$300 million in annual tax revenues. Currently, the northwest is home to two of the 10 metal mines operating in B.C.—Huckleberry, a copper and molybdenum mine employing 250 workers, and Endako, a molybdenum mine employing 370 workers. Future projects dependent on the NTL include Seabridge Gold’s \$4.7-billion Kerr-Sulphurets-Mitchell (KSM) mine, and Imperial Metals’ \$500-million Red Chris copper-gold project.

“The Northwest Transmission Line represents a major milestone toward developing the infrastructure required for the advancement of the many mining projects in B.C.’s northwest, which will ultimately result in hundreds of new jobs and significant capital investment in the area,” says Mining BC CEO, Karina Briño. “This important new line will provide a reliable supply of power, not just to the developments in the area, but also to the communities in which they operate.”

Janine North, CEO of Northern Development Initiative Trust, is exceptionally pleased with the benefits the NTL will bring to local communities in the region. As North says, the Trust was involved early in the process, namely during the feasibility studies grant with the Powerline Coalition, to make the case for the federal government to partner with the province and ensure that BC Hydro had the capital to construct the line.

“This is no longer a dream for the northwest and the rest of British Columbia; it’s very much a reality,” says North, who also sits on the BC Hydro

board of directors. “I personally have flown the line and am pleased with the amount of activity that’s happening in the northwest area, especially Terrace.”

Accordingly, the City of Terrace is anticipating a population surge, thanks to the NTL and subsequent industrial developments that have assisted in the area’s industrial diversification.

“The NTL has already brought a lot to our region,” says Rob Dykman, economic development chair, City of Terrace.

“There’s a lot of economic spinoff and benefits to the community so far—jobs and new business. We’ve seen a lot of companies move to town to work on the NTL and plan on being here for a long time; the NTL being the kick-start.”

The benefits of the NTL have been felt mutually between the surrounding communities and the mining industry. For the Association for Mineral Exploration British Columbia’s (AME BC’s) president and CEO, Gavin C. Dirom, the NTL represents a “new era of prosperity and opportunity for AME BC members, the mineral exploration and development sector and all communities in northwest British Columbia.”

Likewise, B.C.'s Energy & Mines Minister, Bill Bennett, views the NTL's completion as a means of "province-building": "British Columbia's northwest is home to many world-class mineral deposits and is key to the future of mining in our province. The Northwest Transmission Line will provide a reliable supply of clean electricity to attract and support industrial growth, including new mine developments, in the region.

"More than one-quarter of the 20 major mine project proposals currently active in the province's environmental assessment process are located in the northwest and in 2012, 40 per cent of exploration spending in B.C. occurred in the region. With world-class mineral deposits and a reliable supply of clean electricity from the Northwest Transmission Line, the future is bright for the families and communities of northwest B.C."

Third-party contributions from the Government of Canada's Green Infrastructure Fund (\$130 million) and an umbrella agreement with AltaGas (\$180 million) will facilitate much of the construction and development of the \$736-million NTL project.

The contract to design and construct the transmission line itself was awarded to the joint-venture of Valard Construction and Burns & McDonnell (VBM). Under the terms of the contract, Valard is constructing the line and related structures, while Burns & McDonnell is providing engineering design services; the contract to construct the new Bob Quinn Substation and upgrade the Skeena Substation was awarded to Nanaimo-based F&M Installations Ltd. Construction of the NTL project began in January 2012 and is scheduled for completion in spring 2014.

Valard president Adam Budzinski cites the environment as a chief project challenge: "The transmission line path traverses extremely rough terrain with varying environmental conditions in northwestern British Columbia. The design has a detailed terrain hazard assessment that evaluates areas for landslides, avalanches and scour to occur.

"Additionally, the line is subject to extreme icy loading due to the high elevation and extreme large snowfalls in the region. The line also traverses seismically active areas with soils that can liquefy under certain conditions. All these factors had to be considered in the design of the transmission line."

Careful management and scheduling is required to ensure the project remains on schedule, despite environmental conditions. Tower, material and conductor deliveries were carefully planned to ensure on-time availability, and labour camps were set up in support of construction.

Additionally, the line crosses sensitive environmental areas and five major rivers, including the Skeena River and the Bell River, as well as the Nisga'a Memorial Lava Bed Provincial Park. As a result, the joint venture team and BC Hydro continue to work closely with several permitting agencies to ensure environmental impact is minimal.

As Budzinski confirms, there were many elements of note on the NTL project, particularly the use of a helicopter to situate over 1,092 new transmission towers—better known as "guyed Y lattice towers," each 27 metres high, weighing 9.5 tonnes—along the project's right-of-way in preparation for the new line.

"Even with over 200 kilometres of new access road constructed, the terrain is too rugged to truck in material and equipment to build the steel towers," says Budzinski. "The towers have to be pre-constructed and airlifted to their foundation sites. As well, at certain points the line spans in excess of 1,000 metres. Therefore, helicopters play a crucial role in tower construction and stringing conductor wire."

A total of 2,100 kilometres of conductor wire will have been installed before the project's spring 2014 completion. VBM is also on schedule to have all towers installed by December 2013. To date, right-of-way clearing and access-road construction has been completed under contracts between BC Hydro and Nisga'a Nation and the Kitsumkalum, Kitselas, Gitanyow, Tahltan and Skii km Lax Ha First Nations. Many structures have since been installed.

Approximately 840 direct jobs are being created through BC Hydro and VBM—many of which are local hires. In fact, VBM has reported that more than half of its construction labour force consists of local hires between Terrace and Bob Quinn. The team also committed to using First Nations labour for specific construction tasks and First Nations suppliers, as much as possible. ●



**Buildings designed
for your
mining needs.**



866-720-3222
www.steelbuildingcanada.com

THE GROWING NEED FOR STRATEGIC AND HUMAN RESOURCE PLANS

By Judy Mason, MBA, CHRP, Dean Mason & Company Inc.

It's an exciting time in Northern B.C. with the thriving resource sector. However, with this success comes some challenges. The most noteworthy challenge is the shortage in skilled labour. Service providers both large and small need to build capacity and increase worker retention to meet their needs and remain sustainable. Some companies are reporting a 100 percent turnover rate in their field employees from year to year, despite competitive salaries.

It's normal for resource sector businesses to develop strategic plans for their short- and long-term visions. However, with the growth in mining, forestry, and oil & gas, it is increasingly important to invest in strategic planning and develop strategic human resource plans to support the company's operational objectives and reduce recruitment costs.

A strategic plan includes the external and internal environments that influence a company. The external environment concerns the outside forces that impact the

company, such as shareholder expectations, regulations, customers, competition, technology, and environment. Internal environments include vision, strategy, structure, and the culture that fulfills the company's vision. Internal components include human resources, financial needs, sales and marketing, systems and processes, and products and services.

Dean Mason & Company Inc. (DMC) a mid-sized accounting firm serving Prince George and the Northern Region, adopted Strategic Human Resource Planning 15 years ago. The strategy was to identify talented people, support and help them grow, to provide interesting and challenging work and the opportunity to participate in the strategic vision and direction of the firm. As a result, DMC has hired University of Northern B.C. students, trained them and provided them opportunities to grow. Today, two of the three partners, two managers and all the students at DMC came from UNBC.

Strategic human resource planning recognizes that the company's success is directly related to employing the

DISCOVER MORE WITH MAGNETICS



Magnetics represent one of the most effective exploration methods - globally outlining structure, geology, and ore deposits. **GEM** continues to deliver systems around the world with results which have led to discover **gold** in South Africa, **diamonds** in Canada, **copper** in Chile, and more!

GEM is a world leader in supplying the most advanced magnetometers and gradiometers which are reliable, easy-to-use, and accurate; along with providing long-term stability for projects in many different environments. **Ground, Airborne, Base Station, and UAV** units are available with the **highest data quality** and specifications **in the market.**

For your next mineral exploration project – consider GEM



GEM Systems, Inc.

Tel: +1 905 752 2202
Fax: +1 905 752 2205
info@gemsys.ca • www.gemsys.ca



- Custom Sawmill Specializing in Douglas Fir
- Custom Lumber and Architectural Timbers
- Treated Timbers
- Bridge Timbers, Timber Mats, Bridge Modules
- Decking and Construction Components

Tel: 250-961-0146 — www.timberspan.ca
Email: info@timberspan.ca — 12985 Willow Cale Rd, Prince George BC V2N 7A8



CARIBOO CHROME & HYDRAULICS LTD.

Complete Hydraulic & Machine Shop Services
Hard Chrome Plating & Grinding
Metal Resurfacing Specialists

JIM YORSTON
Manager

Cell 250-960-8471
Toll Free 1-800-663-4461

1685 South Ogilvie Street
Prince George, B.C. V2N 1W7
Telephone 250-562-0166
Fax 250-562-3855

Email: jjorston@CaribooChrome.com
www.CaribooChrome.com

right people with the right skills at the right time. Here is a checklist of things to consider when you are implementing a sustainable strategic human resource plan.

PLAN

- Assess your current HR capacity (how many of the right people with the right skills do you currently employ);
- Forecast HR requirements (the right people, right skills, right time);
- Complete a GAP analysis (the lag between right people and right time);
- Develop HR strategies to support organizational strategies (groom, source, outsource).

IMPLEMENT

- Obtain management agreement for the HR plan;
- Ensure the plan complies with existing laws, regulations, and the bylaws of your organization;
- Communicate the plan throughout the organization;
- Evaluate using benchmarks on a regular basis to measure the success of the plan.

One hundred percent turnover in any company's staff is not sustainable and indicates that these companies are not addressing the wants and needs of their current and future employees. Work opportunities are now passing from the baby boomers to the next generations. Generation X and Y employees come from a younger pool of employees, and

while salary is important to them, they are also looking for other values from their workplace. These employees are not all about money – they are equally concerned with flexibility, lifestyle, balance and the opportunity to learn and grow. They are more educated, and looking for diversity in their work and communities. Understanding generational expectations and developing creative, attractive recruitment and retention strategies will need more of your company's attention going forward.

Keeping talented staff and reducing recruitment costs is directly related to every company's bottom line, and will need determined focus today and into the future. ●



Multiple configurations available



Customized to suit user's needs



BC's mining building solutions on time, on budget

BC's only full service steel & fabric dealership
 1-866-935-4888 • www.spanmaster.ca • Email: info@spanmaster.ca



New rigid frame & fabric structures



Turnkey shop and office



Available from simple to complex

INVESTING IN NORTHERN B.C. - NEW MACKENZIE BULK TRANSFER TERMINAL POISED TO DIVERSIFY THE REGION'S INDUSTRIES

By Jillian Mitchell



A new bulk transfer facility being developed by Cardero Coal Ltd. and Navcor Transportation Services (Conifex Inc.) will soon make Peace River Coalfield's isolated coal deposits accessible.

Located on Williston Reservoir near Mackenzie, the new shortsea shipping, bulk transfer facility will act as the link between barge and rail transportation and will improve the transportation of metallurgical coal from the proposed

Carbon Creek Mine to Ridley Terminals Inc. facility in Prince Rupert.

"Shortsea shipping provides a low-emission, cost-effective, safe means to transport large volumes of bulk product direct to rail and will enhance scheduling and supply predictability," says Keith Henderson, executive vice-president of Cardero Coal, a wholly owned subsidiary of Cardero Resource Corp. "Without the access to market that this terminal will provide, the metallurgical

coal mines on Williston Reservoir would not be able to go into production."

Upon completion, the shortsea shipping lane on the Williston Reservoir will not only provide access to the existing railhead at Mackenzie but will also open "water to rail access and a new corridor into the Asia Pacific gateway" for long-term trade benefits, adds Henderson. The partnership between Cardero and Navcor on the development of this terminal will add



many millions of tonnes of trade to the Asia-Pacific market.

As the executive vice-president confirms, the selected project location on the Williston Reservoir has exceptional support from the municipal council and the District, particularly from Mackenzie Mayor Stephanie Killam, who says the terminal will help diversify industrial business conducted in Mackenzie.

“A short-sea shipping model is the most effective way for a number of mines and lumber facilities in the area to reach rail,” says Killam. “The District of Mackenzie believes that the Williston Reservoir can play a significant role in improving economic trade with Asia.”

“We believe that this project will provide economic and environmental benefits for our community through job creation, improved rail infrastructure and service, the reduction of truck traffic, and less road-impediment with sensitive First Nations traditional territories.”

Several major metallurgical coal deposits are located close to Williston Reservoir as well as zinc and niobium deposits. As Henderson explains, the development of a shortsea shipping lane in the reservoir, together with bulk transfer facilities, will accommodate transportation of the coal to Ridley. The barge option provides a safe and reliable transportation solution—one barge per day versus the movement of 120 truckloads per day. Storage on the terminal site will also allow for a better managed flow of product to port.

“Plans for an alternative haul road development were scrapped due to various difficulties including prohibitive capital requirements, high operating cost, elevation, terrain, steep grades, environmental impact, safety and concerns from First Nations,” Henderson adds. “Potential rail solutions would require higher capital investment.”

Cardero Coal is developing the site primarily to service the Carbon Creek mine for which a positive prefeasibility study was published in late 2012. Currently, the site is in early planning stages, with phase one encompassing all planning and permitting aspects for development of the coal terminal. Phase-two construction will be completed in line with the development timeline for the Carbon Creek mine, which could ship coal as early as 2015, and Cardero’s Prefeasibility Study contemplates coal shipments of 4.1 million tonnes per annum. Phase three’s expansion will be contemplated as and when other deposits approach mine development and total throughput could reach 9 million tonnes per annum by 2020, if other operators are able to develop their deposits.

ⁱ Transport Canada defines shortsea shipping as “a multi-modal concept involving the marine transportation of passengers and goods that does not cross oceans and takes place within and among Canada, the United States and Mexico.” ●

RADIUS
DRILLING CORP.
CONTRACT DRILLING SERVICES

**Geotechnical
and core drilling
specialists.**

**For all your drilling
requirements,
please visit:**

www.radiusdrilling.com

BROCK WHITE EXPANDS TO BETTER SERVE NORTHERN B.C.



By Darci Smart

Forming hardware, concrete hardeners, tools and accessories?

Check!

Geotextile, erosion and sediment control?

Check!

Grouts, sealants and insulation?

Check and check!

These are just some of the many products required on a day-to-day basis by the growing mining sector in Northern B.C. And these are just some a handful of the many items available through Brock

White Construction Materials.

It was just over a year ago that Brock White merged with Steels Industrial Products Ltd. The marriage of these two companies now means a wider range of products available through one source.

As a result of the merger, the branches have now relocated into a new 20,000-square-foot facility at 1706 Ogilvie Street, which opened in May of this year.

"Bringing Brock White (formerly Nor-Spec) and Steels together proved to be a

great combination in the Prince George market, as we really did not cross over product lines," explains branch manager Ben Williams. "Now we really offer a wide range of materials in demand by the mining and construction industry, and it's all available from one source."

The team worked closely with general contractors and Ready-Mix suppliers to provide forming hardware, cementitious and epoxy grout, concrete hardeners, tools and accessories, as well as insulation, geotextiles and geomembrane products for the Taseko Gibraltar Mine GDP3 – a project that has increased Gibraltar's concentrator capacity to 85,000 tons per day.

Brock White was also extensively involved in Thompson Creek Metals' Endako Mine expansion, providing a similar range of materials, as well as technical support, to general and trade contractors.

Brock White supplies masonry and industrial insulation, which were added to the portfolio of products supplied to general, mechanical and electrical contractors. The company also supplied materials for the Thompson Creek Metals' Mount Milligan copper-gold mine project 1.55 minutes northwest of Prince George.

Other projects the company has been involved in include the Yukon Zinc

YOU HAVE A HARD ENOUGH JOB. LEAVE THE "GETTING THERE" TO US!

Aberdeen
HELICOPTERS LTD.
SERVING NORTHERN BRITISH COLUMBIA | Tel: (250) 962-5566 | www.aberdeenheli.com



Wolverine Mine, the Rio Tinto Alcan KMP expansion project and Imperial Metals' Red Chris Mine, now under construction.

With locations in Prince George, Kamloops, Kelowna, Victoria and the Lower Mainland, Brock White is well-

positioned to serve the B.C. mining sector.

Brock White is a trusted supplier of construction products since 1954. The company serves commercial, residential, highway and industrial contractors through distribution centres in Minnesota,

North and South Dakota and across Western Canada.

Brock White Company LLC is headquartered in St. Paul, Minnesota with Canadian operations based in Winnipeg, Manitoba. ●

BROCKWHITE

CONSTRUCTION MATERIALS

YOUR SOURCE. YOUR RESOURCE.



- Concrete Accessories
- Polyurethane Coatings
- Grouting Supplies
- Commercial Insulation
- Epoxies & Grouts
- Geosynthetics
- Erosion & Sediment Control
- Waterproofing
- Tools & Equipment

Prince George

1706 Ogilvie Street
 Prince George, BC V2N 1W9
 250-564-1288 1-877-846-7505

Kamloops

760 Laval Crescent
 Kamloops, BC V2C 5P3
 250-374-3151 1-877-846-7502

HELPING BUILD YOUR SUCCESS

www.BrockWhite.ca

TURNING IDEAS INTO ACTION

New Gold Working With Community on the Blackwater Project

By Jillian Mitchell



New Gold's proposed Blackwater project in north-central British Columbia is slated to be the largest gold mine west of Ontario—with the potential of an astounding 500,000 ounces of gold and 2 million ounces of silver, annually. Undeniably, such a reputation brings with it much excitement and much responsibility.

"An important measure of our success is our ability to strengthen the health, social and economic well-being of the people in the communities where we work."

Environmental sustainability is equally high on the company's list, adds Tim Bekhuys, director of Environmental and Sustainability. The company is currently undergoing a comprehensive federal and provincial environmental review of the project and expects to submit its applications for environmental approval

early in 2014. Additionally, New Gold has signed Exploration Agreements with First Nations in the project area and is committed to working closely with Aboriginal peoples through the life of the mine.

"Our approach on the environmental side was to invest upfront to complete environmental studies to make sure we could incorporate environmental design principles into the engineering work. We'll be able to avoid those areas where there is a sensitive habitat," Bekhuys says, adding that careful attention was put into avoiding the Blackwater drainage systems.

The Blackwater project is a prime example of what a major mining project can do for a town that has traditionally relied on a forestry industry— if both the mine company and the community work together. Working with New Gold

is Vanderhoof, B.C., a community of 4,500 poised for "decades of growth" as the resource industry develops local properties and deposits such as Blackwater, says Mayor Gerry Thiessen.

"I see the benefits of Blackwater being quite significant for our community over the next 25 years," says Mayor Thiessen. "We're predominantly a forestry community, and Blackwater allows for diversification. It's given a real neat opportunity to the business climate of the community. It's been very good for Vanderhoof."

More than \$130 million was spent by New Gold on goods and services in 2012—approximately 75 per cent of this in the Blackwater region. And of the 400 workers employed or contracted in 2012, local hires reached 66 per cent with Aboriginal hires totalling 28 per cent (and \$6 million in Aboriginal contracts). New Gold will continue to develop local training partnerships and recruitment and procurement strategies as the company prepares for an expected 1,000 to 1,500 hires during peak construction and 500 fulltime workers during operations.



"Responsible development is a philosophy that extends throughout our company and guides every decision we make," says Bob Gallagher, president and chief executive officer of New Gold.



Since acquiring the Blackwater site in 2011 from Richfield Ventures, New Gold has been committed to making a positive contribution to the region through the Blackwater Project, a site located 160 kilometres southwest of Prince George and 110 kilometres southwest of Vanderhoof that has been actively explored since 1973. New Gold's Blackwater project will undergo technical and economic studies and permitting work through 2014, with an updated Feasibility Study expected to be complete by the end of 2013. Construction is estimated at \$1.8 billion.

"We are working closely with local and regional governments and community members to explore ways the project can leave a lasting positive impact—one that meets local priorities and values," adds the New Gold president and CEO.

"We are committed to hiring as many local people as possible, especially during operations, and will contract locally whenever practical. To help us achieve our local hiring goals, we are working on training initiatives with the College of New Caledonia and the BC Aboriginal Mine Training Association."

New Gold has organized citizens' forums, open houses, and focus groups in Fort St. James, Burns Lake, Fraser Lake, Vanderhoof, Prince George and Quesnel to learn more about community values and objectives and to seek community input on the project. In addition, the company continues to meet with First Nations, land holders, educational institutions, health authorities, local and regional governments and others with an interest in the project.

Perhaps most proactive is the project's Community Liaison Committee, hosting regular meetings in an effort to achieve local and regional priorities. The committee represents education, social services, environment, and local and regional government interests.

Turning ideas into action is a major focus of the many community initiatives. New Gold's realignment of its proposed transmission line to reflect stakeholder interest and minimize effects on land and tenure holders is an example of the company's commitment to listening and taking action. Approximately 70 per cent of the 133-kilometre transmission line running from the mine site to an existing substation south of Endako will follow existing roads, trails, and clear cuts.

After the mine's 15+ year life cycle, a mine reclamation plan will be put into

action. The plan includes removing all site structures (which will be clustered together to minimize the site's footprint), allowing the pit to fill to create a lake, constructing wetlands and covering and re-vegetating the waste-rock storage area.

New Gold's recent win at the 2013 Natural Resource Forum in Prince George (Developer of the Year Award for the Blackwater Project) seems to confirm the company is on the right track.

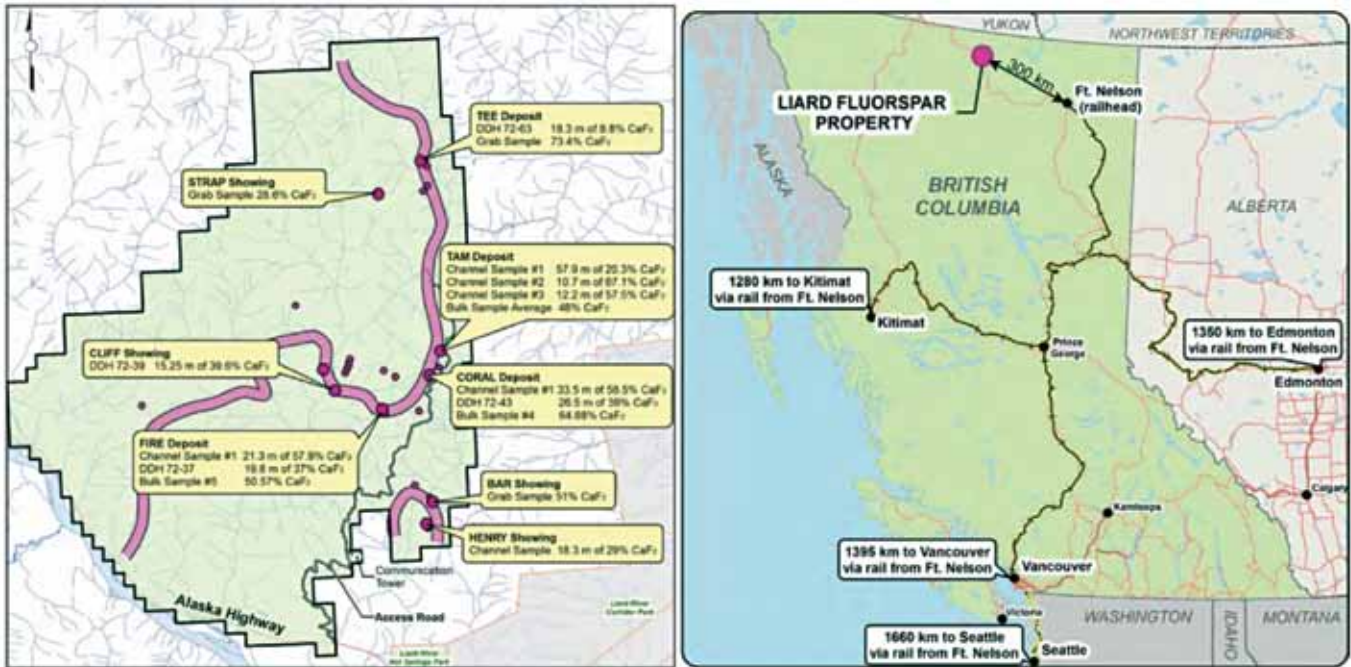
"We're trying to make sure we move forward sensitively and with the region," Bekhuys says. "I think the approach that we've taken is to really understand at a grassroots level what the community vision and values are and try to align our vision and values with those of the local communities and the region." ●

EQUIPMENT THAT PERFORMS. CRAFTSMANSHIP THAT LASTS.
 TO SEE MORE VISIT WWW.FALCONEQUIP.COM

FALCON

Lifting Expectations Since 1988.

PRIMA FLUORSPAR CORP. POSITIONING ITSELF TO BE THE FIRST POTENTIAL DOMESTIC FLUORSPAR SUPPLIER IN NEARLY 20 YEARS



Prima Fluorspar Corp. is a Canadian publically traded company recently listed on the TSX Venture exchange under the ticker symbol PF. The company is actively advancing and developing the historic* Liard Fluorspar project located in Northern British Columbia. Through the acquisition and development of strategically sourced fluorspar assets, Prima looks to become a global leader in the fluorspar sector. The Liard project represents one of only a few prospective fluorspar projects known in Canada. Prima has also recently entered into a letter of intent with affiliates of Firebird Management LLC to acquire an additional strategic fluorspar asset in Mongolia.

Fluorspar, the commercial name for fluorite (CaF₂), is a critical commodity to the steel industry (metspar or steel smelting flux), aluminum industry (AlF₃)

and a component of a significant portion of the chemical industry (HF). The annual worldwide market for fluorspar is estimated at \$2.4 billion. World reserves of fluorspar are estimated at 240 million tonnes with annual production of 6.2 million tonnes in 2012 at an average selling price of ~\$400/tonne (Roskill 2013). Since 2003, the average selling price of fluorspar has increased significantly as a result of supply uncertainty and pressures felt within the supply chain. Approximately 70 per cent of world production is acid-grade fluorspar known as "acidspar", used primarily to manufacture hydrofluoric acid (HF). The main input for all downstream fluorochemical products such as fluorocarbons and fluoropolymers is HF; it is also the primary feed stock to aluminum fluoride (AlF₃), which is used in the aluminum

metal recovery process. Metallurgical grade fluorspar or "metspar" is used primarily for flux in steel production and in the manufacture of cement and enamels.

Fluorspar is considered a strategic commodity by the United States and European Union countries and is unsubstitutable in the majority of its applications; as a result of emerging market demand, primarily from China, Fluorspar supply certainty has diminished over the last decade.

China is now the largest supplier and consumer of fluorspar, and increased demand and domestic consumption there has put fluorspar on the radar for strategic commodities at risk in security of supply. Canada and the US import 100 per cent of their fluorspar requirements; as a result, fluorspar is a commodity considered to be at risk.

The Liard Fluorspar Property is a historically explored project consisting of 22,588 hectares of contiguous claims, located along the Alaska Highway 300 kilometres northwest of the railhead at Fort Nelson. The Liard property has an historic geological resource* of approximately 3.2 million tonnes averaging 32 per cent fluorite (non 43-101 compliant) with mineralization close to surface. Prima believes that this historical mineral resource* provides a conceptual indication of the potential of the property and is relevant to ongoing exploration. Over 60 holes in seven major showings were drilled in 1971 and 1972 by Conwest Exploration Company, a well-established, well-funded company. The mineralization follows a lithological contact, which continues across Prima's property for several kilometres. Prima is confident in the potential for expansion of the resource* at depth and along strike for several kilometres as the historic drilling was shallow and did not follow the ore-bodies to depth or along strike. Next season will see an aggressive drill program to confirm and expand the

existing historic geological resource*. Historic metallurgical testing of bulk samples and drill core from the property indicates the ability to produce a high-quality acid-grade product of greater than 97 per cent CaF₂ using conventional flotation methods.* Metallurgical testing methods have improved substantially since the 1970s which indicates the

potential for even higher quality results.

"Prima is pleased to be advancing this historic project with the potential for economic opportunities in Northern British Columbia," says Prima President and CEO Robert Bick.

For more information on Prima, please visit www.primafluorspar.com or call Tyler Lowes at 604-681-1568. ●

***HISTORICAL DATA:**

Prima Fluorspar Corp (Prima) has not undertaken an independent verification to classify the historic resource estimate quoted from a Mineral Potential Compilation Report for the B.C. Department of Economic Development, written by Wright Engineers Limited and H.N. Halvorson Consultants Ltd., in January 17, 1975 as a current mineral resource. Neither has Prima independently verified the results of the previous exploration work. Therefore, the historical mineral resource should not be relied upon, but the issuer believes the information to be relevant and reasonably reliable. An unknown

quantity of the 3.2 million tonnes are on mineral claims outside of the current Liard Fluorspar Property. However, based on the information available, the majority of the estimate is based on the deposits located on Prima's Liard Fluorspar Property. The key assumptions, parameters and methods of the resource estimate are unknown at this time. New deposit definition drilling is needed to develop a current resource estimate on the property.

Prima believes that these historical mineral resources provide a conceptual indication of the potential of the property and are relevant to ongoing exploration.



PRIMA
FLUORSPAR CORP

Ground Work

- ❖ Ground geophysics
- ❖ Mapping and evaluation
- ❖ Rehabilitation of existing road

Resource Delineation

- ❖ Trenching Program to define and expand known mineralization
- ❖ Drill program to define depth, thickness, continuity and consistency based on trenching data

Analysis and Metallurgy

- ❖ Assay results
- ❖ Preliminary processing flow sheet



WWW.PRIMAFLUORSPAR.COM

TSX-V: PF

Robert Bick - President/CEO
T 604-681-1568
C 778-847-1089
rbick@primafluorspar.com

Sean Charland - Director
T 416-364-0303
C 647-926-7326
scharland@zintu.com

Dean Nawata - Director
T 604-561-2821
C 604-561-2821
dean@fnr.com

Tyler Lowes - Corporate Communications
T 604-681-1568
C 604-329-5097
tlowes@primafluorspar.com

FOSTERING COMMUNITY

Mount Milligan Copper-Gold Mine Providing Regional Opportunity

By Jillian Mitchell



Many people have touted B.C.'s Mount Milligan project a "game changer" for the province's north-central region and, of course, for owner Thompson Creek Metals Company Inc. Located midway between Fort St. James and Mackenzie (and 155 kilometres northwest of Prince George), the new copper-gold mine officially opened in October 2013 to several accolades from surrounding communities.

In 2012, Thompson Creek made a significant contribution to Prince George's economy with a \$61-million direct spend, says Heather Oland, chief executive officer of Initiatives Prince George. Oland added that further opportunity to compete for procurement opportunities as a result of

the mine has also benefited the region's largest city.

"The benefits we've experienced as a result of Thompson Creek's significant investment in the mine has been primarily through our supply and service firms," says Oland. "Thompson Creek and Mount Milligan have done a great job of making sure that as many procurement opportunities that can stay local and regional do. It's a competitive process, though – and that's the way it should be – but local and regional businesses have been very successful in benefiting from the result of the mine."

Mackenzie Mayor Stephanie Killam shares a similar story. For her, it was the connector road between Mackenzie, Fort St. James, and the Mount Milligan

mine site that was perhaps the biggest step in the right direction, fostering additional benefits from the mine.

"Each of us could have gone out and said, 'It's mine—all mine,' but that wasn't the way it was going to work if we were going to survive," says Killam of the partnership among the region's districts. "[The mine presented] an opportunity to connect cul de sac communities. Thompson Creek Metals has been really good to the communities involved, and they've gone out of their way to enlist the communities to become part of what they're doing."

The District of Fort St. James has a similar focus on community, with a first-of-its-kind community-based research project currently being conducted in

relationship with the Nak'azdli and Tl'az'ten First Nations. Presented at the 2013 World Mining Congress and Expo by UBC's Dr. Janis Shandro, the community-driven study looks at the social health impacts of resource development – such as at the Mount Milligan site and on rural small communities – with an end goal of helping communities create a baseline for social effects monitoring.

"This study has been very positive, and we're using it as a tool when working with industry," says Emily Colombo, economic development officer for the District of Fort St. James. "[The mine has] also been beneficial for the contractors and service providers, not only by helping to bring business to Fort St. James, but also helping them to grow in capacity."

Subsequently, the mine's 2012 win as Northern B.C. Prospector/Developer of the Year only reconfirms the Mount Milligan team's dedication to social responsibility and transparency. As Pamela Solly of Thompson Creek explains, the Mount Milligan project well reflects the mining company's six core values: safety is paramount, act with integrity and trust, value employees, be environmentally responsible, deliver value to stakeholders, and build a culture of empowerment. Through these values, as well as the company's in-the-community committees and initiatives with local post-secondary institutions, Thompson Creek hopes to ensure its position as a valued partner in the communities in which it operates.

In 2012, the value of direct spends conducted by Mount Milligan with local business was approximately \$125 million (wages excluded). During the height of construction, as many as 1,100 contractors were on site, and stats reveal over 200 local companies were hired during 2012, a conscious effort made by the Colorado-based mining company, says Solly.

As she explains, the decision to create a work camp as opposed to bussing in workers was a combination of recruitment and safety: "The construction

of the permanent operations residence (camp) enabled us to expand our recruitment efforts outside of Fort St. James and Mackenzie, which has broadened the scope and skill level of recruits/employees," says Solly. She noted that the camp was designed, constructed and furnished with the intent of creating a three-star lodging facility.

"Safety was also a very important factor," Solly says, adding that winter conditions raised safety concerns about employees either driving or being bussed into and out of the site each day. "Safety was and still is paramount in the mining industry, particularly at all of our operations. We meet all applicable safety codes; we have an on-site medical facility with a nurse practitioner, mine rescue team and helicopter pad in the event of a life-threatening evacuation situation."

Since commencement of project construction through to May 9, 2013, Mount Milligan recorded 5,013,491 hours without a LTI (lost time incident). The exemplary safety record earned the project the John Ash Safety award in June 2013, an award presented to mines with at least one-million worker-hours and the lowest lost-time accident frequency.

Permitting processes for the \$1.57-billion conventional open-pit

mine were just shy of completion in 2009 under previous owner Terrane Metals Corp. (the final fisheries permit was garnered in November 2010). The mine was primed for construction to begin in November 2010, not long after its purchase by Thompson Creek, and construction was completed on time in August 2013.

Approximately 425 permanent jobs were created for the operation of Mount Milligan and an estimated 60 per cent of employees were hired from communities within the region. Although Thompson Creek has not yet given production and cash-cost guidance for the mine for 2014, pursuant to the 2009 feasibility update, the mine is poised to produce an average of 81 million pounds of copper and 194,500 ounces of gold, annually, over a 22-year mine life.

"Thompson Creek is pleased to have been able to construct this mine in British Columbia," says Jacques Perron, the company's chief executive officer. "All of our employees are committed to operate the mine safely and in a responsible manner so that Mount Milligan is a valuable asset not only to our company, but also to all of British Columbia. We thank the many people of the province who contributed to our success." ●



VEP COMMUNICATIONS and SERVICES

- Providing Safety check-ins with documentation for people traveling or working alone in remote areas.
- Aircraft flight monitoring and weather communications.
- Emergency Response Plan assistance.
- Providing expediting services for mining exploration
- Ordering and gathering supplies, freight shipping and receiving, ore sample preparation, documentation, and shipment.

VICKI PODGORENKO

BOX 2315 1000 AIRPORT ROAD
MACKENZIE, B.C. V0J 2C0
PH: 250-997-3777 | FAX: 250-997-3770
CELL: 250-997-1164
EMAIL: vickipodgorenko@telus.net



SITUATIONAL AWARENESS FOR REMOTE WORKSITES

By Andrea de Vries, Communications Coordinator, Raven Rescue Ltd.

How can a mineral exploration worker realistically prepare for the unlimited variety of hazards encountered while in the field?

First of all, nothing can replace the skill developed by time spent on the job.

Experience in the field heightens workers' awareness of their surroundings – they develop an unparalleled ability to maintain awareness of themselves, their co-workers, and the physical environment. This conscious balance is known as "situational awareness".

But how can a newcomer to the field of mineral exploration realistically prepare for fieldwork before they have time and experience under their belt? New workers can expedite the development of situational awareness by participating in training built around job-specific scenarios.

These scenarios will help new mineral exploration workers learn to keep a pulse on each slice of the situational awareness "pie" – environment, team, and self. Realistic simulations of issues encountered in the field will give workers a safe context

to challenge and improve their problem-solving skills.

Employers or supervisors who pursue training that challenges workers to integrate job-related technical skills with skills that raise awareness (such as wilderness first aid, pre-planning, safe work procedures and emergency response) will position their workers to excel at what they've been hired to do. Workers will miss fewer days on the job, crews will function at a higher level, and the company's risk profile will be lowered.

Mackenzie
HOSE & FITTINGS
"The Connection for Industry for 20 Years"

- Hydraulic Crimp Fittings & Adaptors
- Quick Disconnects Hydraulic & Pneumatic Pipe Fittings, Malleable Iron, Brass, Stainless
- Fasteners • Heavy Duty Truck & Trailer Parts • Filters • Valves • Gauges
- Industrial Hoses, Petroleum, Chemical, Steam, Fire
- Power & Hand Tools • Permatex & Loctite Products
- Visa Truck Rentals

Ph: 250.997.5757
Email: nearyk@hotmail.com
www.mackhose.ca

DEL
Communications Inc.

Suite 300, 6 Roslyn Road,
Winnipeg, Manitoba, Canada R3L 0G5
Toll Free: 1.866.831.4744
Toll Free Fax: 1.866.711.5282
www.delcommunications.com

DEL Communications Inc. and You.
The key to success.

*We offer outstanding personal service
and quality in the areas of:*

CREATIVE DESIGN | ADVERTISING SALES
TRADE PUBLICATIONS
QUALIFIED SALES & EDITORIAL TEAM



Below are some examples of how scenario-based training can prepare a field worker in advance:

Environment: Steep slopes, moving water, and ice can all be part of a typical day of fieldwork. Training will prepare workers to assess these environments, as well as equip them with the skills necessary to access work sites safely.

Team: Members of a worker's team or crew are another major slice of the situational awareness pie. For example, scenario-based first aid training will prepare a worker to administer first aid for a crew member, while continuing to maintain awareness of the environment (i.e.: is the weather getting worse? Are we on a steep slope in danger of rock fall?) and themselves (i.e.: am I at risk of getting too tired or cold and ending up in trouble myself?).



Self: A healthy sense of self-awareness allows an individual to make this sliver of the situational awareness pie as thin as possible. Workers can improve their awareness of their skills and limitations through professional development and training. The more self-aware the worker, the more prepared they are to devote attention to variables outside of their control when the time comes. ●



Raven Rescue Ltd.
Training, Equipment & Services

Training

- Technical Rope
- Confined Space
- Surface Ice
- Swiftwater
- Wilderness First Aid

Equipment

- Personal Protective Gear
- Rope, Carabiners, & Harnesses
- Specialty Rescue Gear

Standby

- Technical Rope Rescue
- Confined Space
- Swiftwater Rescue
- Surface Ice Rescue
- Rescue Boat Operations

Services

- Site Assessment
- Standard Operating/Safe Work Procedures
- Subject Matter Experts

REDUCE YOUR RISK PROFILE.





NFPA 1670 & 1006 compliant

1-800-880-0287

www.ravenrescue.com



HELICOPTERS LTD.

2985 Airport Rd., Kamloops, BC V2B 7W8
Ph: 250-376-7790

- Mining & Mineral Exploration
- Drill Moves
- Camp & Equipment Mobilization
- Staking & Sampling
- Environmental Sampling
- Remote Site Operations



www.cc-heli.com

ALEY NIOBIUM PROJECT HAS KEY ROLE IN NORTHERN BRITISH COLUMBIA MINING EXCITEMENT

By Leonard Melman



Your Way Up

- Daily direct flights to Vancouver, Kelowna, Prince George and others
- Regular scheduled flights to BC's mineral resource region along Highway 37, including Dease Lake and Bob Quinn
- 7,500 ft of paved runway
- New LPV approaches for lower landing limits
- Airport land available for lease and for sale
- Multiple airport-based helicopter and fixed wing charter operations

SMITHERS
regional airport

www.smithers.ca/airport

There is little doubt that the world is living in a period of remarkable technological advances in everything from communication devices to robotics to retail manufacturing and distribution. These advances are not only changing the way we live, but they are also responsible for an attention shift within the British Columbia mining industry. One metal of particular interest is niobium (Nb).

Niobium is a soft, gray, ductile metal (originally named "columbium") which was first discovered in England in 1801 and was observed to be remarkably similar to another metal, tantalum. A second, separate discovery of niobium was made in Germany midway through the 19th century and although of interest to chemists and metallurgists, few practical uses for the new metal were identified until early in the 20th century.

For many years, by far the greatest market for Niobium was from the steel industry where using Nb-based alloys added strength, toughness, formability and weldability to steel. However, with the development of advancing technology, niobium's attribute of stability under excessive heat found new uses including jet-engine components, gas turbines and rocket assemblies.

Niobium is also an excellent electricity conductor and this has led to a variety of industrial applications including magnetic resonance imaging (MRI) and superconducting magnets. When alloyed with lithium, niobium is used in a host of "new-age" products including

mobile telephones, acoustic wave devices, thinner plastic optical lenses and a host of medical devices such as pacemakers. However, it must be noted that the steel industry remains the prime consumer of niobium at this time.

As has been the case with many specialty or rare-earth-element (REE) metals, China has been one of the leading sources of supply, but the future level of Chinese exports has become more than slightly uncertain and, as a result, end users have stepped up the search to locate economic ore bodies and develop production in other nations. One region receiving particular attention is British Columbia and within that province, a high level of attention has been focused on Taseko Mines Ltd.'s Aley Niobium Project.

Located in North Central British Columbia about 140 kilometres north of Mackenzie, the Aley deposit was discovered in 1980 by Cominco, and in the mid-1980s approximately 10,000 metres of diamond drilling was completed in 20 holes. However, the project then lay idle until it was acquired by Taseko in 2007, at which time they began an exploration program to confirm the earlier Cominco results.

Taseko then undertook an exploration program of their own in 2010 involving both geologic mapping as well as 4,460 metres of drilling in 23 holes which identified niobium mineralization across an area measuring 900 metres east-west and 350 metres north-south with the mineralization intercepted being highly continuous and close to surface.

Based on the 2010 program, Taseko released a report during 2011 showing an inferred resource of 159 million tonnes grading 0.43% niobium pentoxide (Nb₂O₅).

An additional extensive drill program was conducted during 2011 in order to collect preliminary geo-technical data, aid in site design for an open-pit niobium mine and advance metallurgical test work. The company also used that data to upgrade the

resource estimate to the measured and indicated categories and in spring 2012 released an updated report showing a measured and indicated resource of 285 million tonnes grading an average of 0.37% at a cut-off grade of 0.20% Nb₂O₅ plus an inferred resource of 144 million tonnes at an average Nb₂O₅ grade of 0.32%. These figures were noted when Taseko President Russell Hallbauer stated in March 2012 that "...the contained kilograms of niobium make Aley the largest undeveloped niobium project in the world."

During the early part of 2013, the company was proceeding with metallurgical studies on ore from Aley and had already achieved the production of a niobium concentrate. Going forward, plans include environmental permits through 2014, conducting engineering studies and working toward a feasibility study during 2015.

These are indeed exciting times for mining in northern British Columbia and niobium exploration and development is playing a key role. ●

**SAFETY EQUIPMENT PROVIDER
FOR ALL EXTREME WORKING CONDITIONS**

**To learn more, please contact your local
Guillevin branch today.**

**GUILLEVIN
INTERNATIONAL CO.**
SAFETY & INDUSTRIAL DIV. **MSA**
The Safety Company

www.GuillevinSafety.com

NETWORKING DONE RIGHT

2013 NIMG Networking Event

Connects B.C. Suppliers to Industry

By Jillian Mitchell

Ask a group of conference goers about an event's highlight and you'll typically get a variety of answers. But at the 2013 annual Northern Interior Mining Group (NIMG) networking event, mining

reclamation trumped as the evening's buzzword.

"Mining reclamation was an eye-opener for everyone in the room," says Steve Sullivan, Northern B.C. sales

representative for Crossroads C&I Distributors and NIMG board member. "That was my impression, and I asked a lot of people afterwards. Many had no idea what reclamation was. The speaker was so passionate and really simplified the idea and its implications."

Sullivan's opinion was echoed by fellow director David Kim, who expressed equal satisfaction with speaker Jennifer McConnachie, inspector of Mines (Reclamation) for the Ministry of Energy and Mines, and her presentation at the November 21st event hosted at Prince George's Coast Inn of the North.

"In Northern B.C., we're quite strong in forestry. I felt in terms of leveraging that knowledge into different industries, reclamation might be a suitable option for us to look at," says Kim, past chair of Northern Resource Solutions Group and principal of Kim Forestry Management Ltd. "The reclamation information was quite interesting. Jennifer did a great job speaking to that."

The evening's buzzword was well-complemented by each of the event's three speakers, who in detail discussed the state of the industry and how northern British Columbians can best get involved. Over 50 attendees were privy to the over-dinner presentations and ensuing mingling opportunities. NIMG Chair Fraser Deacon reports that attendance was typical of an NIMG event though many attendees this year were first-timers.

Kicking off the evening was Minister of Aboriginal Relations and Reconciliation John Rustad, who introduced the idea of mine reclamation and furthered it with the notion of Aboriginal engagement. This additional theme was built upon by speaker Amber Teed, First Nations coordinator for New Gold Inc., while

Geotech
DRILLING

1-888-228-1234 • www.geotechdrilling.com

GEOTECHNICAL EXPLORATION ENVIRONMENTAL HYDROGEOLOGICAL GEOTHERMAL HEALTH & SAFETY

www.cascade-mechanical.ca

Jaron Sucholotosky
Manager

ASC MECHANICAL LTD.
A S C A D E

CSABC The Construction Safety Association of British Columbia
COR CERTIFIED

Structural Steel Erecting • Repair & Maintenance
Industrial Mills • Storage Tanks • Millwrighting • Piping

1840 Quinn Street
Prince George, BC V2N 1X5
jaron@cascade-mechanical.ca

Phone: 250-564-2883
Cell: 250-961-3958
Fax: 250-562-8953

Kim, a relative newcomer to the industry, reported many benefits of the event. As he explains, it was informational with ample opportunity to network.

McConnachie's presentation on mine reclamation rounded out the evening.

"Minister Rustad comes with a portfolio that also includes Aboriginal engagement, which is so close to the New Gold project. It was very timely and really aligned with Amber Teed's background, and I think it also aligned with Jennifer McConnachie and working with the Ministry of Mining and Resources," says Deacon, Human Resources manager, Geotech Drilling Services Ltd.

The NIMG regularly holds networking events as a means to promote industry communication and connection. Attracting an array of service providers, the annual gatherings previously marketed as a business procurement events are now focused primarily on networking and mingling—a change that has since raised the group's benchmark, says Deacon.

"Annual networking events are an opportunity to engage people with an interest in connecting business services to mining," says Deacon. "One of the ambitions at these events was to try to communicate the procurement activities—how people get on the track to becoming a supplier to these billion-dollar mining projects; how we can develop relationships to support mine reclamation."

Kim, a relative newcomer to the industry, reported many benefits of the event. As he explains, it was informational with ample opportunity to network.

"For me, events like these are a great value for a business—to be part of an association, to find a fit in the industry. Having the opportunity to meet others and get information that's not readily available, it's very valuable for me," he says. "I think this is most friendly to those that are least familiar to the mining industry. I would say it's a safe

environment for somebody who's trying to figure out what's going on and start developing their network."

The 2013 NIMG event was a first for Sullivan. The NIMG director admittedly plans to attend future events, highlighting industry networking as a key perk.

"I think it's very important that the local supplier base connect with mining

and natural resource opportunities and connect on multiple levels," says Sullivan. "If we can all build momentum around supporting the mining industry, we can develop a lot of infrastructure and support networks so that we can keep the dollars in northern B.C. that major projects spend, and use it to improve the situation for everyone." ●



EXCEEDING EXPECTATIONS

Serving Western & Northern Canada



Expedited & Rush Delivery Services

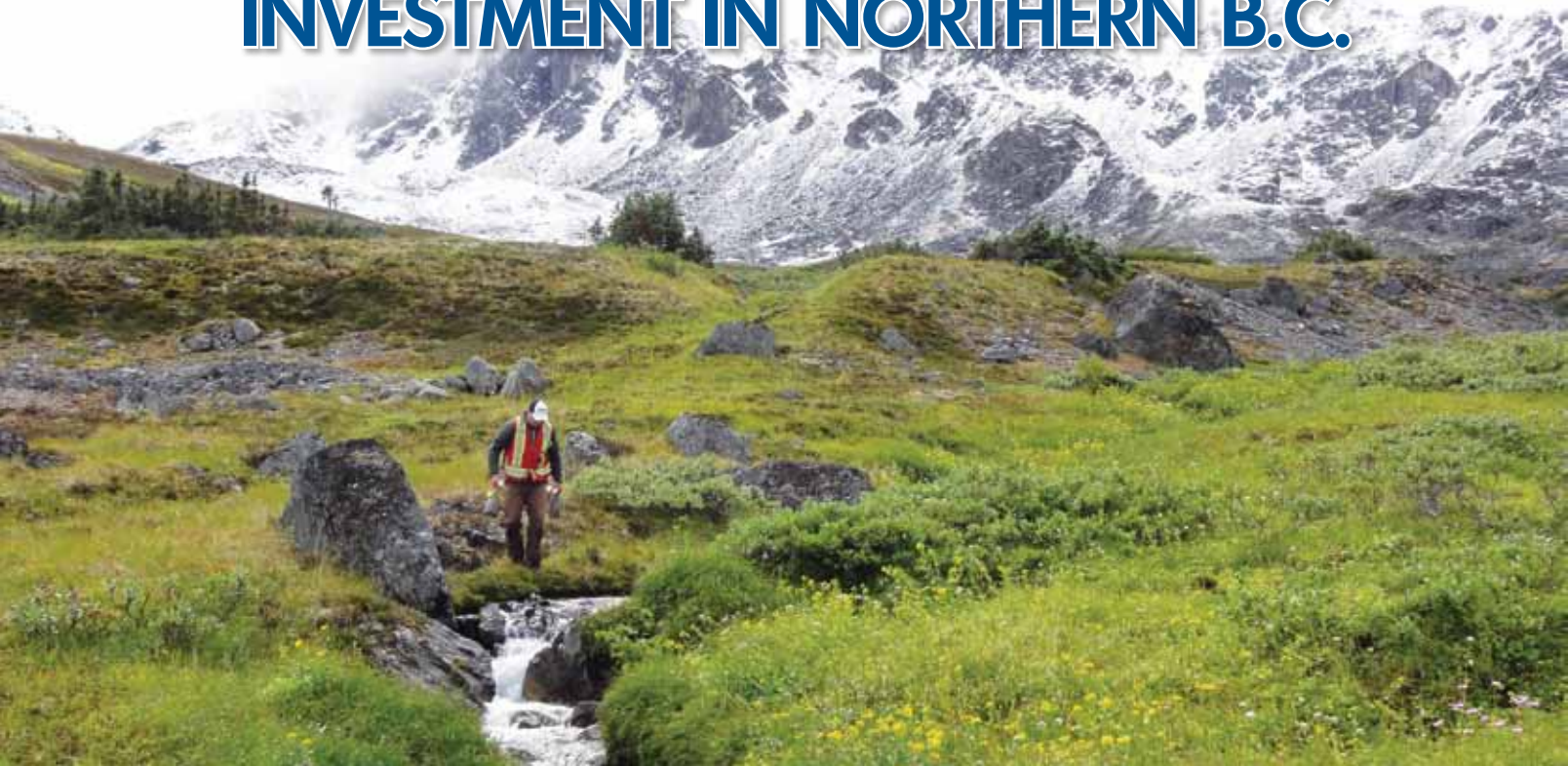
**100% On Time Guarantee
Or You Don't Pay**

**Available 24/7/365 for immediate dispatch.
For all your time-sensitive shipments, Contact Us!**

1-877-417-2798

www.jt-hotshotting.com

ENCOURAGING EXPLORATION AND INVESTMENT IN NORTHERN B.C.



North Central B.C. is getting a first-hand look at the regional benefits Geoscience BC (GBC) delivers through a combination of sound science and technology.

This past spring, Colorado Resources Ltd. announced a major copper-gold discovery hole on their North ROK property and credits Geoscience BC's QUEST-Northwest project for assisting in their exploration success.

QUEST, or Quesnellia Exploration Strategy, was launched by Geoscience BC in 2007 and developed into a series of regional projects that resulted in significant follow-up exploration by mineral exploration companies in Northern B.C.

QUEST projects have used geochemical and airborne geophysical surveys to develop datasets that Geoscience BC puts into the public domain for review by anyone who's

interested in better understanding the area's geology and potential for mineralization. Geoscience BC's work has led to more than one million hectares of Crown land being staked in B.C.

"Programs such as QUEST-Northwest have become important exploration tools for us," says Colorado's President and CEO Adam Travis. "The airborne magnetic highs as outlined by the QUEST NW airborne surveys, for example, have given us numerous targets to follow up on which have led to discoveries. No other jurisdiction in the world in my opinion does a better job of delivering first-class, readily accessible geoscience data to industry."

In a January 29, 2013 press release, Amarc Resources Ltd. attributed last summer's staking of the ZNT property by Quartz Mountain Resources Ltd. to geochemical results released by Geoscience BC.

Hunter Dickinson Inc. Executive Vice President of Exploration Mark Rebagliati stated "the ZNT property was originally staked to cover a till sample with exceptionally high zinc concentrations, and because of this sample, exploration expenditures to date exceed \$250,000. The publication of the till survey resulted in several multiples more in exploration expenditures than the cost of the original survey by Geoscience BC."

Founded in April 2005, Geoscience BC was created to stimulate mineral and oil & gas exploration interest and investment in the province. The industry-led, not-for-profit organization has spearheaded its own large-scale projects and funded other relevant research projects that are improving the

A graphic advertisement for Alpha Safety Ltd. The top left features the Alpha Safety Ltd. logo with a stylized alpha symbol. To the right, it says "FIELD MEDIC AND H2S SUPERVISION" and "24 HOUR DISPATCH 1 855 870 1199". Below that, it lists the address: "8703 - 101 Avenue, Fort St. John, BC, V1J 2A5", phone number "PH: 250-787-7025", email "E: dispatch@alphasafety.net", and website "www.alphasafety.net". The bottom left section is titled "TRAINING" and lists "FIRST AID, H2S, INDUSTRIAL, DRIVER & OUTDOOR COURSES" with a toll-free number "888 413 3477" and website "www.alpha-training.ca". The bottom right features the "alpha TRAINING SOLUTIONS" logo and the text "A DIVISION OF ALPHA SAFETY LTD.".

Northern B.C. economy by encouraging exploration investment — and potentially, the development of new mines.

GBC's newest regional minerals initiative, the TREK Project (Targeting Resources through Exploration and Knowledge), is currently testing over 25,000 square kilometres south from Fraser Lake and Vanderhoof to Anahim Lake and west from Quesnel to enhance mineral exploration interest in the area. This region is considered highly prospective for mineral resources, yet remains underexplored due to thick overburden and poorly understood bedrock geology.

GBC-funded projects attract investment to B.C. through working partnerships with First Nations, communities, industry, government and academia to identify and fund the collection, interpretation and distribution of publicly available applied geoscience information.

The organization has received \$48.7 million in funding from the provincial government since 2005, including significant grants from the Mountain Pine Beetle Recovery Accounts of the Northern Development Initiative Trust.

GBC has leveraged over \$19 million through its partnerships with industry, university, the federal government and communities, turning every dollar of funding into \$1.54 spent in the ground, thanks to its partners.

GBC released the high-resolution airborne magnetic data from the QUEST-Northwest Project in January 2013; the survey was flown in the Iskut area in summer 2012. Two airborne magnetic surveys were flown as part of the same project in 2011 in the Dease Lake and Telegraph Creek areas, along with a geochemical sampling program and a regional bedrock mapping program done in partnership with the Ministry of Energy and Mines (BC Geological Survey). All of these components have helped to vector exploration efforts in the region.

More recently, the summer of 2013 marked the start of field work for the TREK project. Partners include the Ministry of Energy and Mines (BC Geological Survey), the Mineral Deposit Research Unit at the University of British Columbia, PK Geophysics, Noble Exploration Services Ltd., Heberlein Geoconsulting and Aeroquest Airborne Ltd. With these partners, several different exploration geoscience methods are being undertaken, including:

- Airborne geophysics
- Stream, lake, soil and till geochemical sampling
- Till reanalysis
- Geological mapping and mineral deposit studies
- Biogeochemical sampling

GBC data has also been recognized for contributing to exploration work that extended the life of the Huckleberry mine and the old Silver Queen mine.

GBC's delivery of results through collaboration and partnerships allows the organization to play a distinct role that builds on government and academic efforts aimed at encouraging investment in British Columbia.

For more information on GBC, its activities and project results, please visit www.geosciencebc.com. ●



DATA FOR DISCOVERY



Geoscience BC is an industry-led, industry-focused not-for-profit society that works to attract mineral and oil and gas investment to British Columbia through the collection and distribution of geoscience data.

Suite 440-890 West Pender St. | Vancouver, BC V6C 1J9
Tel: 604.662.4147 | Fax: 604.662.4107
www.geosciencebc.com



twitter.com/geosciencebc

THE LITTLE ENGINE THAT COULD: NORTHERN SPIRIT TRANSPORTATION HITS THE ROAD

By Melanie Franner



Paul Clermont always loved driving. For years, he had a job with a large charter company driving routes north of Prince George. But then the company lost the contract that had kept Clermont employed for years.

"I didn't have any work," explains Clermont. "Luckily, the company allowed me to keep a couple of buses so I could run some of my own charters up here, from Prince George through B.C. and to Alberta."

But when the company was bought out in 2005, Clermont found himself in a tough situation. "They wouldn't let me keep the buses for my charters but they did say that if I started my own company, they would lease me a couple of buses," he says. "That was the window of opportunity that I was waiting for. I put a proposal together, went to the bank and got a \$20,000-limit credit card. I wrote a cheque for the buses for \$8,400 and

with gas and supplies, I had less than \$8,000 by the time I got back home."

MINING AN OPPORTUNITY

Today, Clermont is President and Founder of Northern Spirit Transportation and has some 25 employees and over 20 vehicles. Seven of them are rugged 4x4 units that are able to withstand the rough, pot-holed roads that characterize most northern mines. The 4x4 units are an innovation Clermont designed in concert with one of his mining customers, Thompson Creek Metals Company, and a bus manufacturer called Turtle Top. The other vehicles are a mix of highway coaches, all-wheel drive buses, school buses and vans.

Driving contracts for mining companies remain at the core of Northern Spirit Transportation.

"For the past year and a half, I have had an operator's contract for the Mt. Milligan Mine," says Clermont. "Prior to that, I had the mine's pre-construction and construction charters."

Prince George remains the company hub, Northern Spirit Transportation's headquarters and maintenance and repair shop location. The company also has satellite offices in Fort St. James

"Your One Stop Quality Rental Store"

P.G. RENTAL CENTRE LTD.

SERVING CONSTRUCTION, INDUSTRIAL, & RESIDENTIAL

LOCALLY OWNED & OPERATED FOR OVER 20 YEARS

- Air Compressors & Tools
- Automotive Tools
- Boom Lifts & Scissor Lifts
- Compaction Equipment
- Concrete Equipment
- Electric Tools
- Excavators
- Generators
- Lawn & Garden Equipment
- Lighting Equipment
- Plumbing & Heating
- Pumps & Hoses
- Safety Training
- Scaffolding & Ladders
- Skid Steer Loaders
- Trailers
- Wedding & Party Supplies
- Welding Equipment
- Wood Chippers
- Telehandlers

24 HOUR EMERGENCY SERVICE

7 Days a Week

DELIVERY AND PICKUP

1669 S. LYON ST, PRINCE GEORGE
(250)562-2626 FAX: (250) 562-3199
www.pgrentalcentre.com

and Mackenzie, both of which are focused on servicing the Mt. Milligan Mine. This customer alone accounts for the use of eight buses a day just for the people involved in working at the mine. Additional buses are called in to handle the visitor tours, which occur regularly.

According to Clermont, although mining customers account for most of his business, Northern Spirit Transportation also supplies services for group charters, athletic teams, conventions and meetings, corporate events and special events.

THE ROAD LESS TRAVELLED

Clermont oversees the daily operation of Northern Spirit Transportation and is very hands-on with the company and with the customers themselves – providing a deeper level of service than some of its competitors.

“We’re locally owned and family owned,” concludes Clermont, who envisions his company growing to about

35 buses within the next three to five years. “We are very competitive and we offer good and reliable service. But the reality is that we know everybody up here. All of our customers know I’m

there in an instant if there is an issue. Sometimes it’s tough being the little guy, but in the end I think our customers appreciate the difference in service that comes with dealing with the little guy.” ●



Contract Diamond Drilling & Consulting

Box 2828, Smithers, BC V0J 2N0
Office: (250) 877-7729 Fax: (250) 877-7580
www.blackhawkdrilling.ca



Safety Driven

www.gonst.ca



#2 - 1810 3rd Ave
Prince George, BC
V2M 3H5
info@gonst.ca

- Safe, Reliable and Professional
- Experience in crewhaul operation
- Specialized heavyduty 4x4 units
- Unmatched focus on customer needs



NORTHWEST TRAINING LTD.

Empowering Individuals through the Employment Program of B.C.

WorkBC Employment Services Centre



Canada

The Terrace WorkBC Employment Services Centre, run by Northwest Training Ltd., has free tools and resources available to assist unemployed individuals with job search including the following:

- Job Boards
- Photocopy Services
- Computers & Internet Access
- Telephones
- Labour Market Information
- Fax Machine

- Resume & Cover Letters Samples
 - Networking Ideas
- The Terrace WorkBC Employment Services Centre can offer tools for unemployed people to make choices about the right career for them. We provide information regarding funding, process training applications to approved training institutions and assist with apprenticeships in the trades. We maintain effective working relationships with employers in order to keep current,

up to date information regarding industry needs, and make it available in our resource centre. Employers from all sectors including mining, oil & gas, hydro and more can utilize the WorkBC job board and contact us directly to seek out new hires. We can assist unemployed individuals with tickets required, necessary work gear for various industries, including mining.

Every WorkBC Employment Services Centre offers informational workshops

The Explorationist's Best Friends

Reliable, Hi-Performance Land Mineral Surveys - Geometrics' G-859 AP
&
Hybrid-Source Magnetotellurics - The Stratagem EH4

SALES & RENTALS AVAILABLE!!

The G-859 AP is a Professional Magnetic Mapping System for Minerals, Petroleum and Geologic Surveys.

This rugged, high-quality cesium vapor magnetometer offers the best total field magnetic survey tool available. Using the G-859 AP interface makes survey design & data acquisition quick graphical and efficient. The integrated Novatel Smart Antenna™ GPS can be used to map positions automatically. The G-859 is ideal for rapid, high-resolution mining, petroleum, and geologic exploration surveys, as well as academic research and local environmental studies.

The new Advanced Pack affords a comfortable, ergonomic design for ease of use for all body types.




See our Airborne & Base Station Magnetometers



Stratagem EH4 - Mineral Geophysical Exploration 10 to 500 Meters & More - Fast, Precise, Reliable




The Stratagem's hybrid-source technique combines natural MT signals with man-made transmitter signals to acquire reliable and complete data for exploration, surveying and geological structure mapping.

Fast, Precise, High-Resolution EM Surveys for Mining Exploration to Depths of 500 meters and more



GEOMETRICS
Innovation • Experience • Results

Seismographs - Magnetometers - Geo-Electrical Instruments

T: (408) 954-0522 ✦ F: (408) 954-0902 ✦ Sales@geometrics.com ✦ 2190 Fortune Drive ✦ San Jose, CA 95131 USA ✦ www.geometrics.com

for unemployed individuals who want to learn more about maintaining and sustaining employment. Individuals interested in mining careers are referred to various institutions, companies, etc. that do provide training and courses for careers in the mining industry. The Terrace WorkBC Employment Services Centre provides the gateway to funding for industry specific training and lays the groundwork for potential workers to prepare them for the increased demand for jobs in the all industries including mining.

The Terrace WorkBC Employment Services Centre is associated with training schools and First Nations agencies committed to working with First Nations to create sustainable economic development in the north, and providing training opportunities that will increase employment opportunities for local First Nations populations. Our role is to keep current of the opportunities and guide our clients in the career they are interested in.

The Upper Skeena Development

Centre, a sub-contractor for Northwest Training Ltd. for the Employment Program of BC (EPBC), has a WorkBC Employment

Services Centre serving Hazelton and bordering communities, including Moricetown. ●

CONTACT INFORMATION

201-4622 Greig Ave., Terrace, BC V8G 1M9

Ph. (250) 638-8108 | Toll Free: 1-877-638-8108 | Fax: (250) 638-7212

www.northwestcareers.bc.ca Like Northwest Training Ltd. on Facebook



**Fresh Produce-Frozen Foods-Bulk Foods-Meats
Dairy-Tobacco-Confectionery**

P.O. Box 667 Smithers BC | V0J 2N0 | Canada

Ph 250-847-3313 | Fax 250-847-3906

1-800-579-3373 | Email: bvwholesale@telus.net



WorkBC Works for Employers!

We provide:

- ✓ Free advertising for job openings on our highly visible job board
- ✓ Access to hundreds of individuals who are actively looking for work and may be the right fit for your company
- ✓ An opportunity to voice opinions about labour market trends and provide input about current and upcoming staffing requirements and potential training needs
- ✓ Access to wage subsidy programs for eligible participants
- ✓ Funded certification and training for eligible participants
- ✓ Job start supports for new hires who require short-term tickets or work gear as a condition of their employment



Contact us or our Satellite Office for more information on how WorkBC works for employers today

Northwest Training Ltd
201-4622 Greig Ave. Terrace, BC V8G 1M9
Ph. (250) 638-8108 | Toll Free: 1-877-638-8108
Fax: (250) 638-7212
www.northwestcareers.bc.ca

Satellite office

Upper Skeena Development Centre
4345 Field Street, Village of Hazelton BC
Ph. (250) 842-6110
www.usdc.ca



The Employment Program of British Columbia is funded by the Government of Canada and the Province of British Columbia

MT. MILLIGAN AND THE MCLEOD LAKE INDIAN BAND - AN AGREEMENT TO BUILD UPON

By Leonard Melman

There is little question that mining project developments within Canada must pay increasing attention to First Nations' rights and desires. Many recent court decisions have served to

strengthen the entire area of Aboriginal rights and the general public has, by and large, accepted this as a positive development. In addition, provincial governments have also begun to

take an increasingly active role in negotiations between miners and native groups.

One of the most striking examples of this concept has been the interaction between the developers of the giant Mt. Milligan copper-gold mine; the McLeod Lake Indian Band ("McLeod Lake") and the provincial government of British Columbia.

Mt. Milligan has become one of the most important projects in the world of Canadian mine development. The open-pit project is located approximately 150 kilometres northwest of Prince George and was advanced through exploration and pre-development by Terrane Metals. That company sold the project to Thompson Creek Metals (TCM) in 2010 for \$600 million, becoming a subsidiary of TCM in the process.

Since that time, TCM has expended some \$1.5 billion in facilities construction and now projects initial production to begin in late summer 2013 with the onset of commercial production by year-end 2013. During an estimated 22-year mine life, it is anticipated the mine will produce 194,500 ounces of gold and 81 million pounds of copper annually, with additional silver values.

The mine is also expected to make a major contribution to the economy of North-Central British Columbia by maintaining an operating staff of approximately 400 workers, almost 70 per cent of whom are residents of nearby towns such as Fort St. James and Mackenzie and about 90 per cent are residents of British Columbia.

Thanks to a vitally important "economic and community development agreement" negotiated in

WOLFTEK
INDUSTRIES INC

4944 Continental Way Prince George, BC V2N 5S5

Ph: (250) 561-1556
TF: (800) 991-4399
Fax (250) 561-0235

wolftek.ca

- Machining
- Fabrication
- Hard Chrome
- Field Service & Construction
- Engineering & Design
- Industrial Automation & Controls
- Turnkey Solutions

SILVERWOOD
NATURAL RESOURCE CONSULTANTS

210 - 4644 Lazelle Avenue
Terrace, BC V8G 1S6
Email: mail@silverwoodconsulting.ca
Ph: 250-635-0766
TF: 866-734-8644

Rock Solid Choice for Junior Mining Companies
Engineers - Foresters - Biologists

Services
Road and Route Reconnaissance/Engineering/Supervision
Preliminary Environmental Assessments and Reviews
Timber Valuation
Snow Pack Assessments (Associate)
Test Drill Permits and Applications
Stream/Fish Assessment and Nesting Bird Surveys
Environmental Monitoring

Silverwood vision... to partner with world leaders in the natural resources sector in northwest British Columbia. "Together we Grow"

www.silverwoodconsulting.ca

2010 by the Province of British Columbia and signed by the McLeod Lake Chief and Council, the Mt. Milligan project also promises to make a major and favourable impact on the band itself.

In essence, the agreement calls for the province to share tax revenues collected from Thompson Creek's operation of the Mt. Milligan Mine.

First, the agreement stipulates that the mine site is located within McLeod Lake's claimed traditional territory; that McLeod Lake has a history of use of the proposed mine site area and that McLeod Lake has historically been the dominant Aboriginal presence in the area.

According to the agreement, the Province will tabulate the total amount of tax, penalty and interest to be assessed for a particular year, then identify the amount actually paid by the mine operators. The Province will also allow for any property tax or penalty refunds. Of the net remaining amount, 15 per cent will then be paid into a trust established by McLeod Lake.

During recent years, there have been reported incidents of abuse of funds by several First Nations groups, and in order to forestall any similar circumstances with the McLeod Lake Trust, one of the pre-conditions in setting up the trust was that as a primary goal, the purpose of the trust is to benefit McLeod Lake and to enable the band to work toward achieving their social and economic goals.

As a matter of corporate policy, Thompson Creek has agreed to participate in meetings with government representatives and First Nations or with First Nations individually; share information about Thompson Creek's proposed actions affecting First Nations when legally permissible; provide project information reasonably requested by First Nations and work with First Nations to accommodate their interest wherever and whenever reasonably possible.

The company also stated they consider First Nations' traditional knowledge to be of value and it plans

to incorporate such knowledge into future project planning and reclamation projects, as appropriate.

This agreement appears to be of positive importance to all sides. Thompson Creek Metals now has a solid agreement whereby they can make plans into the future with a high degree of certainty; the Province has found a balance between advancing mining while protecting Aboriginal rights and the McLeod Lake Indian Band can now look forward to having the financial ability to work for the benefit of all Band members.

As such, this agreement could serve as an industry model for future mining/ Aboriginal negotiations.

SOURCES:

- www.mtmilligan.com
- www.petroleumnews.com
- www.biv.com
- www.thompsoncreekmetals.com
- www2.news.gov.bc.ca/news
- www.mlib.ca ●

FIREWEED
HELICOPTERS

Whitehorse
867-668-5888

Mayo
867-996-2100

Dawson City
867-993-5700

Operating:
206B
206L3
206L4
204C
HU500D
MD520N

**Box 26,
Whitehorse, Yukon
Y1A 5X9**
fireweedhelicopters@northwestel.net
www.fireweedhelicopters.ca

NORTHERN STEEL LTD. – GETTING THE JOB DONE RIGHT



With over 35 years of experience helping the mining industry, Northern Steel Ltd. (NSL) is a diversified metal-fabrication firm providing custom fabrication and machining services throughout Canada and the world.

NSL provides up to 25 per cent of their business to the mining sector, designing and supplying wear packages for various types of mobile equipment, including hydraulic face shovels, excavator buckets, dozer blades and more. Specializing in heavy platemwork fabrication of process equipment for the mining sector and local mines, Northern Steel Ltd. is located in the heart of Prince George, surrounded by mines, making it a convenient local source for servicing the needs of the mines in Northern and Northwestern B.C.

In addition to specializing in high-wear components, Northern Steel Ltd. provides custom fabrication services to mining process plants, and on-site labour for structural and mechanical installations, as well as portable line boring. Their 70-ton

overhead crane capacity (with 35-foot under-hook) allows them to handle and work on large mining components. "We have a fully outfitted conventional and CNC machine shop to service the machining needs of the mining sector, and we have robotics welding that allow us to provide repetitive parts on a cost effective basis," notes President Eduard Hausot.

The company has six acres of storage yard available for inventory products or mining equipment storage in Prince George's industrial area, as well as 55,000 square feet of fabrication and machine shop floor space. NSL offers a fully outfitted conventional and CNC machine shop, sandblast and painting services, and 27 welding and plasma stations that handle various welding capabilities for carbon steel, alloy and dissimilar metals.

"We have grown our mining business significantly over the last five years, with most of our expansion coming from the mobile equipment area," Hausot says. "We've always enjoyed a very



diverse mix of customers, so the deterioration in the forestry industry didn't impact us in the same way it would impact other competitors. That said, we recognized the need to make sure our organization can provide program style value added services tailored to meet our customers' high standards."

The future is looking good for the company as it seeks to grow in the mining sector and utilize their well-trained crew to tackle program fieldwork opportunities. Northern Steel Ltd. aims to increase their market share of wear packages on large shovels, refurbishment of dippers, and expansion of portable line-boring offering with existing mines as well as new mines.

For most manufacturing companies, hiring skilled and production-oriented tradespeople is always a challenge. NSL's reputation as a top-tier employer, coupled with the wide variety of complex and challenging projects they manufacture, helps them recruit qualified tradespeople who enjoy taking on new and exciting projects.

"We would like to take this opportunity to thank the mining industry for their business and support for over 35 years" Hausot says. "We're investing in our business as a direct result of our program business relationships with long-term mining customers, and we are looking to continue developing strategic MRO programs and partnerships with mining customers." ●



Bree Enterprises Inc. dba **Mayfair**
WELL PUMPS & WATER TREATMENT
Professional Water Treatment, Well Pumps & Septic Removal – Sales & Service
MAYFAIR GAS & PLUMBING INC.
Plumbing, Heating, All Gas Installs
CAMP CONSTRUCTION

Don McMullen
 Cell: 250.565.7656
 info@mayfairinc.com

250.562.8590
 Fax: 250.614.1419
 www.mayfairinc.com

2002 S. Quinn Street, Prince George, BC V2N 1X5

GENOMICS: A New Tool in Bioremediation

By Dr. Gabe Kalmar, Genome British Columbia

As our mineral resource sector continues to flourish, and as more mineral deposits and gas reserves are found and developed, safety concerns must remain paramount. In the mining industry, safety precautions around groundwater contamination are of particular concern: no one wants toxic compounds from mining operations flowing into fish-bearing streams and waterways.

To ensure optimal safety levels, chemicals are used to treat metal leaching and acid rock drainage. These treatments, while effective, are also very expensive and produce their own waste byproducts - which must then be carefully contained for years to come. However, research based in British Columbia is offering new options and new alternatives.

A NATURAL APPROACH

Many mining companies are beginning to invest more into bioremediation techniques to decontaminate mining wastewater. This innovative process uses naturally occurring microbes that live in and around mine sites to “digest” the toxic compounds and detoxify the contaminated water. In essence, the specialized organisms thrive on these toxic chemicals, integrating them into their metabolism and neutralizing toxicity.

Bioremediation has been around for years and we are still learning how these toxin-digesting microbes work, how to best exploit their unique capabilities and how to consistently optimize them. Dr. Susan Baldwin, a professor in the University of British Columbia’s Chemical and Biological Engineering Department, is helping move the science toward application – making bioremediation a more economical and accessible option - by applying genomics to harness these detoxifying biological processes.

HOW GENOMICS IS HELPING

Genomics is the study of the structure, function and inheritance of an organism’s DNA. Like a recipe, which is a set of cooking instructions, a genome contains all the instructions for making a particular organism.

The real benefit of applying genomics to bioremediation lies in the understanding we can gain of how complex microbial communities living together in mining wastewater function and, more importantly, how to make them flourish. In order for these microbes to function effectively and detoxify water, it’s imperative we know what sort of environment best fosters them—the type of nutrients, food sources and what conditions will maximize the growth and function of desirable



GENOMICS AIMS TO IMPROVE BIOREMEDIATION TECHNIQUES TO CLEAN UP MINING SITES AND TAILINGS PONDS.

microbes. While bioremediation is not new, these genomic insights are.

TINY MOLECULES, BIG PROBLEMS

Dr. Baldwin and her team are working to discover microbes with particular abilities to treat a wide variety of waste streams and to then develop bioreactors in which to grow and use these microbes. The challenge is learning about the toxic conditions under which these microbes thrive and being able to replicate these in bioreactors that can be used in the field.

INDUSTRY CONNECTIONS

Genome BC is catalyzing research that aims to improve bioremediation techniques used to mitigate mining waste byproducts. This research is being developed right here in B.C. and testing is underway at mining sites in northern B.C. Through Genome BC-funded projects, Dr. Baldwin is currently working with Teck Resources Limited and Imperial Metals in northern B.C. to gather the data on the microorganisms that live and thrive in contaminated mine water and to find ways to apply this knowledge to help improve mining safety and quality.

“Ultimately, I’d like to see more compact, possibly portable systems that could be used close to the contaminated sites or by smaller mining operations on a limited budget,” says Dr. Baldwin. “We need new methods that enable companies to apply bioremediation at a lesser cost to them and for greater benefit to the environment.”

Genome BC is continuing to advance genomics research in the mining sector and would like to work with industry partners. For more information, please contact Gabe Kalmar, Vice President of Sector Development, at gkalmar@genomebc.ca. ●

CONSIDER MINE SITE REMEDIATION AN APPETIZER.

Genome BC is supporting the development of genomic-based technologies to make mine remediation faster, safer and more cost-effective. New bioremediation methods that use microbes to literally “eat” toxic compounds and decontaminate mine drainage and waste water are showing promising results. As our ability to harvest and propagate microbe colonies grows, so too does the potential to apply biologically mediated techniques to all stages in the mining sequence and provide cost-competitive solutions.

**We're looking for
industry leaders who
want to capitalize on
these advancements.**

For more information please contact:

Gabe Kalmar,
Vice President, Sector Development
gkalmar@genomebc.ca
or visit genomebc.ca



OVERCOMING CHALLENGES FACING MINING DEVELOPMENT

TDB Consultants works with mining clients as they prepare their information gathering for the permitting process and mine site development. For over 25 years, TDB has brought its resource development capacity and expertise to help move development projects from the planning phase to start-up. Whether supporting geotechnical surveys, road construction, timber volume assessments or site clearing, their diverse and multidisciplinary expertise is an asset to clients and their property developments.

Rob Kragt, TDB's Director of Geomatics, uses his photogrammetry and remote-sensing background to assess timber volumes and design road access corridors. Such was the case for a mining company developing the remote Andrew Zinc Deposit in the Yukon when TDB Consultants worked with one client to create a detailed topographic solution complete with survey ground control. The level of detail enabled the company to plan its infrastructure and drilling program.

Access planning a prime example of how TDB develops creative solutions. Over the years, they have become a leading consulting firm delivering engineering, forestry and geomatics services fully complemented with their photogrammetric capacity. Their teams of experienced technical and professional

staff work closely with each other to plan and manage multidisciplinary field and office services to efficiently and safely complete projects.

Andrew Roth, TDB's Engineering Manager, recently worked with a client and their First Nations road-building firm in Northern British Columbia to locate drilling test sites and plan the access route. Whether working for a mining company or for First Nation firms, TDB's goal is always the same: to help clients develop their project in a collaborative manner with their stakeholders.

Access to power is a challenge that many projects face as the sheer distance and imposing terrain are often daunting. TDB has helped to bring power to new developments such as the Kemess South Project with the timber harvest planning of the 380-kilometre power line and more recently with the Northwest Transmission Line (NTL), which will open an entire corner of the province for new opportunities. The recent completion of a project for the Northwest Transmission Line highlighted an innovative solution brought forward by LHI Tut'tit Service Inc., an aboriginal joint venture in which TDB participates with George Lacerte and Stephen Bros Construction. Dave Stephen led the team that brought forward a solution to debris disposal



In Canada you need it...

and for over two decades, Canwest Propane has supplied the mining industry with a full complement of temporary heat services and equipment. From small to large commercial projects, we ensure that your heating requirements are realized safely and cost effectively.

- storage tanks from 20 lb cylinders to 2000 gallon tanks
- portable storage capabilities
- direct and indirect heaters from 150,000 to 2.0 million BTU capabilities
- vaporizers, torches and space heaters
- temporary fencing rentals
- generators 20/25/35/40/60 KW
- full service 24/7/365

With over 40 strategically located branch offices and storage facilities, Canwest Propane leads the industry in quality customer service.



Propane Solutions...Unparalleled Service

• **Scott Nelson – 250-305-4967**

- Surrey – 1-866-589-8244 • Prince George – 888-661-1188
- Fort Nelson – 250-774-3366 • Fort St. John – 250-785-7822
- Williams Lake – 250-392-2971
- Kamloops – 800-852-8811 • Valemount – 800-424-6331

www.canwestpropane.com

Whether working for a mining company or for First Nation firms, TDB's goal is always the same: to help clients develop their project in a collaborative manner with their stakeholders.

along the 335-kilometre corridor. With the use of whole tree-chipping at the stump and portable grinders, the challenge of location was overcome by new technology and expertise in project delivery. The B.C. Aboriginal Awards paid tribute to LHI Tutl'it Services' success in the project with a recognition of Outstanding Business Achievement for a Joint Venture in 2013.

TDB Consultants' success is attributable to its belief in the value of strong and long-lasting partnerships and business relationships. Bringing expertise together with an innovative mindset to find solutions to problems helps client and their projects. TDB's focus on maintaining a culture of environmental stewardship and safety helps ensure they meet the needs of the mining sector. ●

ALPHA DESIGN

SHOP

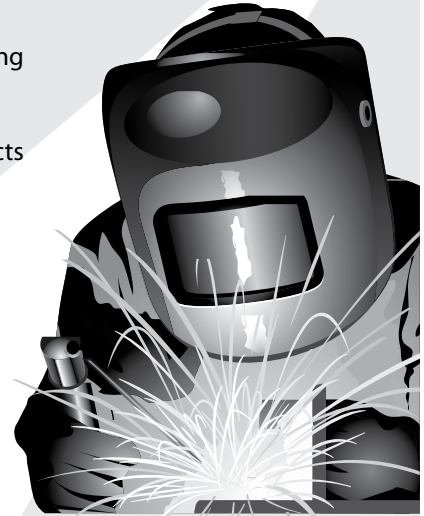
- Welding & Steel Fabricating
- Machining
- Sandblasting & Painting
- Steel & Aluminum Products

CRANE SERVICE

- 70 Ton All Terrain
- 28 Ton Rough Terrain
- 26 Ton Boom Truck

PARTS

- Hydraulic Hoses
- Industrial Supplies
- Safety Products
- Power Transmission



"If you can dream it, we can build it!"

Safety • Hydraulic • Parts & more!

SHOP: 250-378-5395 • 2795 Pooley Avenue

PARTS: 250-378-3765 • 1101 McFarlane Way

Toll free: 1-866-378-5395

www.alpha-weld.com

LEADERS IN RESOURCE MANAGEMENT FOR OVER 25 YEARS

| ENGINEERING |
Road and Bridge Survey,
Design and Plans,
Environmental Monitoring,
Geotechnical Assessments

| GEOMATICS |
Aerial Surveys,
LiDAR,
Orthophoto and
Topographic Mapping

| CONSTRUCTION |
Supervision

| SITE MANAGEMENT |
Permitting,
Site Preparation and Clearing



250.562.1828
INFO@TDB.CA

WWW.TDB.CA

2032 RIVER ROAD
PRINCE GEORGE, BC



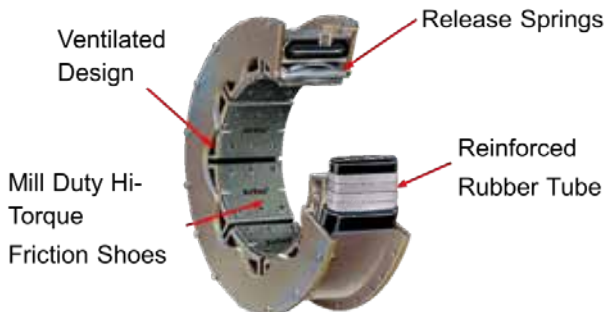
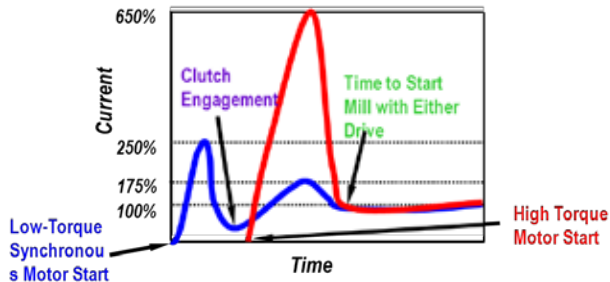
EATON AIRFLEX BREAKTHROUGHS IN BRAKE AND CLUTCH DESIGN

Founded in the late 1920s by Gordon Nelson Russell, Gordon Russell Ltd.'s early years saw the majority of business in the underground coal mines of the B.C. Kootenay region. The products and activity that continue today germinated in the growth of the B.C. forest & mining industries in the 1950s through '70s.

As distributors of Airflex products, Gordon Russell Ltd. brings experience and expertise to maintenance managers and staff in the mining and mineral processing community. Eaton Airflex is well known for applications on grinding mills, shovels and draglines, and the product line is available from suppliers throughout B.C., including two in Prince George.

VENTILATED CLUTCHES

Ventilated clutches use controlled inflation of a rubber tube/friction shoe combination running against a cylindrical drum. They are similar in function to the clutch in a stick-shift car, which engages and disengages

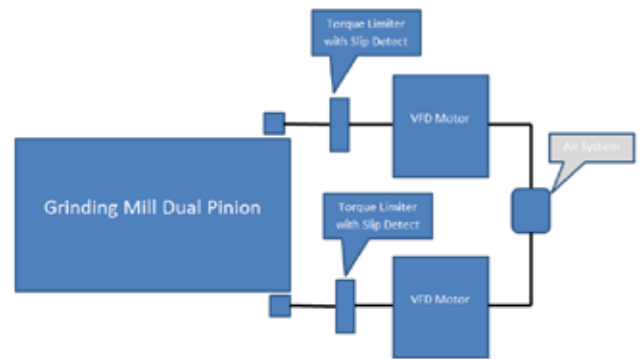


power, and are widely used on most grinding mills (to start up the mills) in hard rock mines. The clutch allows a "no load" start, which reduces power costs by as much as 70 per cent.

The product line includes the world's largest clutch at 14,750 horsepower and 76 inches in diameter in an application currently operating in Mongolia.

TORQUE-LIMITING COUPLINGS (TLC)

A recent innovation that builds on the ventilated clutch concept is the torque-limiting coupling. A torque-limiting device is required as a form of mechanical "fuse" to avoid damage to expensive gearing. If a system such as a grinding mill has forces imposed on it that are too high, the coupling will disengage the drive.



The TLC has a sensor that monitors the transmitted torque. At a specific torque number, the air pressure is released and the drive train protected. The design allows for ease of drive-train operation and adjustment and requires no mechanical reset, lubrication or calibration.

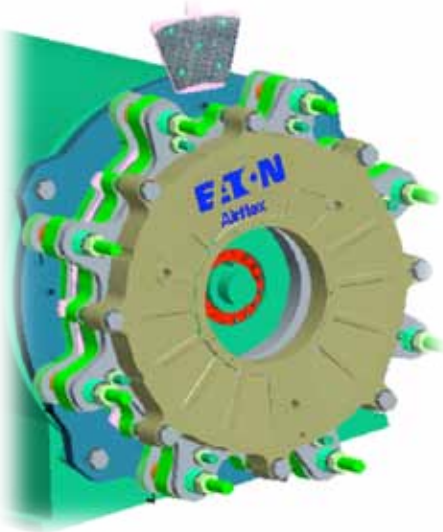
INCHING DRIVES

Inching drives are used in grinding mills to turn them very slowly when linings are replaced or work needs to be done on the drive train. The Eaton Airflex Inching Drive draws on the detail knowledge of the Eaton Hydraulics Division. Consisting of a hydraulic power unit (HPU) and a hydraulic drive unit, the unit is portable with long hydraulic and electrical cables and a remote-operating pendant. An infinitely adjustable speed allows for inspection of gear mesh, alignment and mill charge condition. A frozen charge can be safely stopped, moved to a precise cascade angle, and rocked through a controlled range to break up the charge.



FLOATING HOUSING BRAKE

Floating housing brakes are brakes designed to stop the motion of a bucket on a dragline in an emergency (i.e. if the power fails or the dragline needs to be parked for a period of time. All draglines use brakes of one type or another to control bucket operation.



Eaton's new design provides spring-set (power-off) braking for dragline motors. This patented breakthrough design attaches the rotor to the dragline motor via a shaft lock for faster and safer installation and removal. This feature also eliminates oscillation wear between spline and gears that is seen in current designs. Pressurizing the brake withdraws the clamping force, and when the air pressure is exhausted, the springs reapply the braking force. Braking pads are segmented and can be easily removed and replaced. The 360-degree circumferential disc pads provide a much larger energy capability and surface area than alternatives, leading to "fit and forget" life.

Eaton Airflex is part of the Eaton Hydraulics Division. Eaton Corporation is a \$21 billion corporation with 103,000 employees. Airflex was one of Eaton's earliest acquisitions and pioneered the development of drum- and disc-style brakes and clutches for industrial applications. ●



Gordon Russell Limited

Since 1930 www.gordonrussell.com

Selection—Sales—Service

Grinding Mill Product Offerings Include:

- * Pneumatic Clutches for start-ups
- * Inching drives for maintenance

Complementary Product Offerings Include:

- * Gearboxes: David Brown—Radicon—Bonfiglioli
- * Tramp Metal Detection & Removal
- * Railcar moving: Winches—Trackmobiles



Proudly Distributing and Servicing
Genuine Eaton Airflex Products



For further information on our product visit us at
www.gordonrussell.com or call 1-800-663-1310

Box 700
Terrace, BC V8G 4B8



Fax: 250-638-0888
Tel: 250-638-1414

White River Helicopters



Serving the north coast/ northwestern BC region – Terrace, Skeena Valley, Kitimat, Douglas Channel, Nass Valley, Prince Rupert, Grenville Channel, Kitwanga, Hazeltons, Stewart / Meziadin, Bob Quinn Lake and north into the Stikine River area.



www.WhiteRiverHelicopters.ca

White River Helicopters is experienced in long-line delivery of drills into remote locations in support of the mining and oil/gas industries.

Crew transport | Medivac services | Sling Loads | Camp moves | Geophysical surveys

We also offer services in: Drill & equipment moves | Seismic support




DEL Communications Inc. and you, THE KEY TO SUCCESS.

We offer outstanding personal service and quality in the areas of:
CREATIVE DESIGN | ADVERTISING SALES
TRADE PUBLICATIONS | QUALIFIED SALES & EDITORIAL TEAM

Suite 300, 6 Roslyn Road, Winnipeg, Manitoba, Canada R3L 0G5
www.delcommunications.com

SMITHERS: Mining's Jewel of the North

B.C.'s booming mining industry is helping entrepreneurs in Smithers hit pay dirt. The town of 5,500, located four hours east of the Pacific Ocean at the Port of Prince Rupert, is already a traditional hub for mining activity in northwest B.C. and is primed to expand thanks to a plethora of exploration projects located along the nearby Highway 37 corridor that stretches north to the Yukon Territory.

"Smithers has everything we need to run a successful mining exploration business. The local businesses 'get it' and are able to keep up with quick and accurate order filling," says Harvey Tremblay, President of Smithers-based Hy-Tech Diamond Drilling.

Service and supply businesses in Smithers are growing not only because of new projects and mine expansions in the area, but also because they understand the speed at which the mining industry operates. Deadlines in Smithers are set in hours, not days.

The town – which boasts quality restaurants and hotels because of its role as a tourism destination for the region – is also home to the province's regional mines office, which supports quick and efficient interactions between government and industry in the region.

"When we were thinking about where to have our office, there were many options in northwest B.C. We chose Smithers because it gives us access to the government officials we meet with several times a week, it has a long history of supporting the resource industry, and it has capable and talented suppliers whom we work with," says Brent Murphy, VP of Environmental Affairs at Seabridge Gold Inc. (TSX:SEA).

The town is also home to the Smithers Exploration Group (SEG), which is dedicated to the advancement of geology, exploration and mining in B.C.'s northwest. SEG annually produces the *Northern B.C. Exploration and Mining Directory*, a critical publication that industry regards as a "must-have" for the northwest. SEG also played a significant role in the creation of the School of Exploration and Mining in partnership with the NorthWest Community College, which is also located in Smithers. The school is well regarded in the region and continues to produce students with hands-on skills ready to provide critical support to mining and service and supply companies in B.C.'s north.

With these assets, Smithers will continue to be a quickly-expanding hub for mining activity in northwest British Columbia. ●



Smithers
Exploration Group

www.smithersexplorationgroup.com



Bulkley Valley
Economic Development Association

www.bveda.ca

**Working Together To Support
The Exploration Industry In
Northern BC**

NORTH LANDS

WATER & SEWER SUPPLIES LTD.

**NORTHERN BC'S ONLY AUTHORIZED
FLYGT DISTRIBUTOR & REPAIR DEPOT.**
Sales, Service, Rentals, and Parts



1733 S. Lyon Street
Prince George, BC V2N 1T3

Tel: (250) 561-1884
Fax: (250) 561-1830
E-mail: info@northlandswater.ca
www.northlandswater.ca

*Enviro-Span Modular Culvert Systems
Available only at Northlands in British Columbia*



CHINA MINING
中国国际矿业大会

全球矿业高峰论坛暨展览会
Premier International Mining Conference & Exhibition



November 02 – 05, 2013
Tianjin Meijiang Convention Center

Hosted by
Ministry of Land & Resources, China
Tianjin Municipal Government, China
China Mining Association

>>> Investment – Cooperation – Trade

6000+ Delegates 430+ Exhibitors 300+ Speakers
44 Breakout Sessions 60+ Countries and Regions
20+ Foreign Mining Ministers

◆ About the Event

- Thousands of investment opportunities of mining destinations.
- Event covering the whole value chain including geological surveying, exploration development, mining rights and minerals trading, mining investment & financing, smelting & processing, technique & equipment, mining services.



◆ Thanks to our 2013 Confirmed Sponsors



RBC Capital Markets



Contact: Tel: +86-10-64466855 Fax: +86-10-58857006 Email: info@china-mining.org Web: www.china-mining.org/en

MAKING THE TRIP A LITTLE BETTER

Nor-Burd RV has been family-owned and operated for over 30 years in Terrace, British Columbia. We serve the Northwest from the city of Prince Rupert to the city of Prince George and the smaller villages scattered throughout this beautiful region. We strive to provide our customers with a memorable experience, whether it's purchasing a new RV, stopping in for a part or just advice.

Our business and world are changing all around us due to the boom in natural-resource development in northwestern B.C., allowing for more affluent people and younger people to move to Terrace and surrounding area. To continue and thrive as a company over the next five to 10 years and beyond, we as a company must look ahead and better understand the forces and trends that will shape our business during that time to better suit our customers' needs and desires.

Our parts and accessories showroom was expanded in early 2013, allowing us to display more RV parts and accessories as well as our selection of truck accessories. Our parts and accessories department is run by long-term staff that knows the ins and outs of the product and can find you exactly what you need. We offer a full selection of parts to service any job, as well as a full line of accessories to make your RV and tow vehicle completely unique.

Starting in 2013, we've simplified the

buying process by having our sales manager be our primary salesperson, making your buying process easier and faster to meet the specific needs and desires of the customer. Our finance process is equally simplified, with our finance manager building relationships with you and several banks in order to facilitate the approval process.

Diana Faber from Terrace says, "I find the staff at Nor-Burd very helpful, friendly, and patient. I looked at many trailers several times and no one ever made

Our business and world are changing all around us due to the boom in natural-resource development in northwestern B.C., allowing for more affluent people and younger people to move to Terrace and surrounding area.



ABC
COMMUNICATIONS
www.abccommunications.com



authorized dealer
Your *link*™ to the World!

1.888.235.1174

INDUSTRIAL SERVICES



20

YEARS

TRUSTED SERVICE PROVIDERS IN BC FOR OVER

Wireless Network Design

Wireless Distribution

Cellular Repeaters

Towers Rigging

Microwave Backhaul

RF Engineering

Machine 2 Machine

IT Project Management

Private Networks

ONE link™

BONDED INTERNET

FIBRE link™

FIBRE OPTIC INTERNET

Connections up to 1 Gbps.

Connections for speed and redundancy.

 /abccomm

 sales@abccomm.com

COMMERCIAL OFF ROAD RENTAL SOLUTIONS



- Weekly and monthly terms available
- Delivery & pick up available to most points in Western Canada
- Rental units are reliable, new or near new current models, accessorized to suit clients needs and requirements
- Over 100 units in stock at all times, we can accommodate large orders on short notice
- Training and operators safety equipment available
- 24 hr emergency contact provided for our clients
- Very competitive rates and terms



SPECTRA POWER SPORTS

770 N Broadway, Williams Lake, BC
250.39.3201 • www.spectrapowersports.com

me feel rushed or pressured into buying anything. My overall experience has been good so far. Thanks guys!" Diana's comments outline exactly what we want to provide to every customer: a stress-free buying experience that puts customers in control to ensure they get exactly what they are looking for.

We offer a full-service department all year that handles warranty issues, insurance claims, winterizing, thorough inspections on all pre-owned inventory, and any other repair you may need, from the tires to the roof and the hitch to your bumper. Being centrally located, we have many customers who stop simply because they need something during their trip or just want to browse our facility.

Mary-Jo from Alberta tells us: "We are very thankful for the great service we were given. We would recommend [Nor-Burd] to anyone. The very wonderful RV tech went above and beyond for us. Thanks again."

Our service goal is to ensure that every customer – be they local or from out of town – receives the kind of service

we would hope to have. If we've made someone's trip a little better and put a smile on their face, then we have done our job.

With our sales, service, parts and accessories, as well as our online presence, we continually push ourselves

to make our customers feel like part of the family. We may be a small-town dealership, but we've got big-city service. Come see us the next time you're in the Northwest.

Visit us online and like us on Facebook for exclusive offers.

**GEONORTH
ENGINEERING LTD.**

3975 18th Ave. Prince George BC V2N 1B2
Ph: 250-564-4304

GEOTECHNICAL ENGINEERING MATERIALS TESTING
Foundations | Slope Stability | CPT's | Terrain Assessments Concrete | Soil and Asphalt Testing

Providing services to Resource Industries across Northern and Central B.C since 1982

FAMILY OWNED AND OPERATED FOR THE LAST 34 YEARS.

Nor-BurdRV
Where *Adventure* Begins

New In-Stock RVs

Certified Pre-Owned RVs

We here at Nor-Burd RV have worked hard to establish ourselves as
**the largest RV dealer in the North-West, both in Selection of RVs
and in our Parts & Accessories and our Service Departments**

Phone: (250) 635-6945 | Fax: (250) 635-7337 | 5012 Highway 16 West, Terrace, BC V8G 5S5
www.nor-burdrv.ca

ALL-WEST CRANE & RIGGING RE-ALIGNs ITS CRANE INVENTORY TO SUIT HEAVY CONSTRUCTION AND MINING INDUSTRY



All-West Crane & Rigging Ltd. became a contender in the heavy construction and mining industry when it decided to make the change from a small crane company that only served local industry to a company capable of providing the mining industry with maintenance and repairs support or new mine construction.

As the economy began to recover in 2010, Jerry and Barb van Halderen recognized a trend for major growth in the mining and heavy-construction sector and so began the acquisition of a new fleet of cranes. Early in 2013, they chose a new name that they felt was more indicative of the type of company that they wanted to promote: All-West Crane & Rigging Ltd.

Jerry recognized the advantages of owning modern rough-terrain

cranes, particularly the new Link Belt RT cranes, due to their versatility as well as their ground-up engineering for transportability. In addition to new cranes, the company also added tractor/trailer units to its fleet. The new Link Belt cranes' fast set-up time, combined with the fact All-West Crane now owns its own tractor/trailer units, provided it with a response time that was as quick as a company with traditional hydraulic truck cranes or all-terrain cranes.

To complement the fleet of new cranes, three-dimensional (3D) lift planning was added to the company's arsenal of services. The 3D lift planning technology has enabled All-West Crane to provide all forms of lift planning services from rigging plans to critical lift plans and engineered lifts of all types.



The benefits of 3D lift planning far outweigh standard two-dimensional planning due to people's ability to now look at a lift from all angles through to the creation of animated movies showing how the entire lift will take place. All-West Crane's customers and the engineering firms that work with it like this new technology, which has proven to be a huge cost savings by reducing costly time and improving safety.

As they say, "a picture is worth a thousand words" and that ensures everyone involved with a lift, knows exactly what will take place.

All-West Crane & Rigging's crane inventory is very diverse, ranging from the smallest model 295 Spydercrane, capable of travelling through a standard doorway, up to the largest RT available in B.C., the Link Belt RTC 80130-II. The latter is capable of being hook-ready in 1.5 hours from the time of arrival without needing an assist crane.

All-West Crane & Rigging is excited about the newest technology and

engineering developments in the crane industry and is continually looking at new cranes to better serve customers.

To round out the service provided by All-West, the company is the Western Canada distributors for Caldwell Lifting

Solutions and Dica Outrigger Pads.

All-West Crane is well positioned to tackle any type of lift, complex or otherwise, providing timely and cost-effective service throughout Western Canada. ●

AXIS Mountain Technical Inc.

**RISK MANAGEMENT | MOUNTAIN SAFETY
BLASTING | MOUNTAIN CONSTRUCTION**

**Rugged, Challenging, Complex...
We move tough projects forward!**

INTEGRATED PROFESSIONAL MOUNTAIN TEAMS FOR MINING EXPLORATION, FORESTRY, OIL AND GAS.
250.240.3983 • 250.631.7740 • mtnsafe@telus.net • info@bearmountaineering.ca

BRINGING FAMILY CARE TO INDUSTRY

By Larry Barrett and Glen Blair

AMCO Wholesale - what's in a name?

In the case of AMCO (Alexander Moffat Company), there exists over 100 years of heritage, legacy, community support and family care. AMCO Wholesale is a family-built, family-owned, family-operated and family conglomerate of sister companies including AMCO Wholesale, The Northern Appliance Centre and The Northern Hardware and Furniture Co. Ltd. The Northern Hardware was established in 1919, and AMCO Wholesale was added to the family tree in 1973. AMCO's belief is that it has pioneered the industrial supply industry for the Central Interior; as a result, it is uniquely positioned to supply business involved in the increased activity in the mining, oil, gas, forestry and construction industries.

AMCO has thrived due to the company's outstanding protocol, a foundational element of their corporate culture: "if we do not have it, we will get it" and "service our clients beyond expectation". They pride themselves in their ability to source what clients need in a timely fashion, and if they can't supply it, they'll point clients in the proper direction. AMCO works with competitors rather than against them because clients require what they need now. There will always be

competition. There will always be service, but there is only one AMCO - "built on service." This is the Moffat family legacy.

AMCO has established itself as a leader in supplying north, east and west of Prince George in these growth industries. Many client needs can be met with AMCO's cohesive supply networks, unique attention to quality, quick and efficient action, and their family-service protocol. Clients are their extended family, and their needs are AMCO's needs as the company aims to develop a trusted and dependable relationship. Carrying many year-round products, along with numerous seasonal products, AMCO boasts a 10,000-square-foot warehouse stocking a myriad of industrial items from nuts and bolts, safety supplies, environmental-spill containment, on-site clothing, material-handling equipment and hand tools through to power tools.

Over the years, AMCO has established itself in the quality items market and has retained competitiveness through competitive pricing. If they don't have what customers are looking for, they'll usually get it within an acceptable timeframe. If not, they'll find where customers can get it - they're committed to service, with or without a sale, and their goal is to develop solid business relationships that are mutually beneficial. ●

AMCO WHOLESALE BUILT ON SERVICE!

AMCO Wholesale is a leading local Industrial Supply House serving Northern British Columbia's industrial and commercial customers for over 40 years. We supply the mining, drilling and exploration industry throughout Northern BC. Our commitment is to supply a quality product and service experience.

- Industrial, Safety & Construction Supplies • Fasteners, Power Tools & Abrasives
- Oil & Chemical Spill Containment & Clean-Up



1030 2nd Ave | Prince George: 250-564-4451 | Call Toll Free: 1-800-667-9366
general@amco.bc.ca | www.amco.bc.ca

NEC

NORTHERN ENERGY CONSTRUCTORS

9368 Milwaukee Way, Prince George, BC. V2N 5T3



PRODUCTS

NEC is able to provide thermal energy turnkey bio-mass systems from initial design to construction including the fabrication of major components at their facilities in Prince George, British Columbia.

NEC has 'A' & "MA" class licenses for the fabrication and installation of pressure vessels and piping.

NEC has recently been active in the design and fabrication of air make up systems to help sawmills with their dust control programs. Energy for the heating is provided by thermal oil or from flue gas stack economizers.



SERVICES

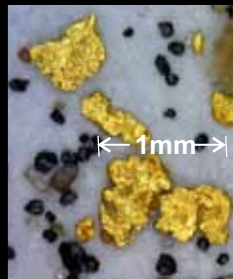
NEC is able to provide shutdown scheduling services for its customers and maintains inventories of essential spare parts such as grate bars and reciprocating grate mechanisms.

Process systems hazard analysis (Hazops) is provided on an as needed basis to ensure the safety of personnel and protection of plant facilities.

www.nec-bc.ca

Tel: (250) 562-8100 | Fax: (250) 562-8101

Email: main@nec-bc.ca



Tenorex GeoServices

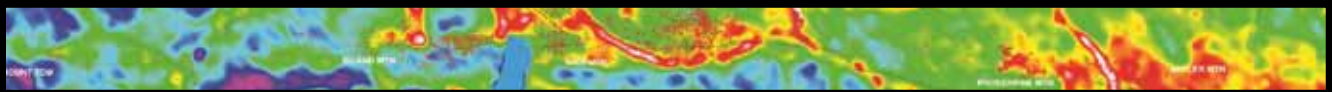
Prospecting Supplies * Claim Staking * Tenure Management
Custom Maps * Permits * Field Work * Research & more
experienced and friendly staff

336 Front Street Quesnel, BC V2J 2K3

Ph.778-414-9199 Fax778-414-9198

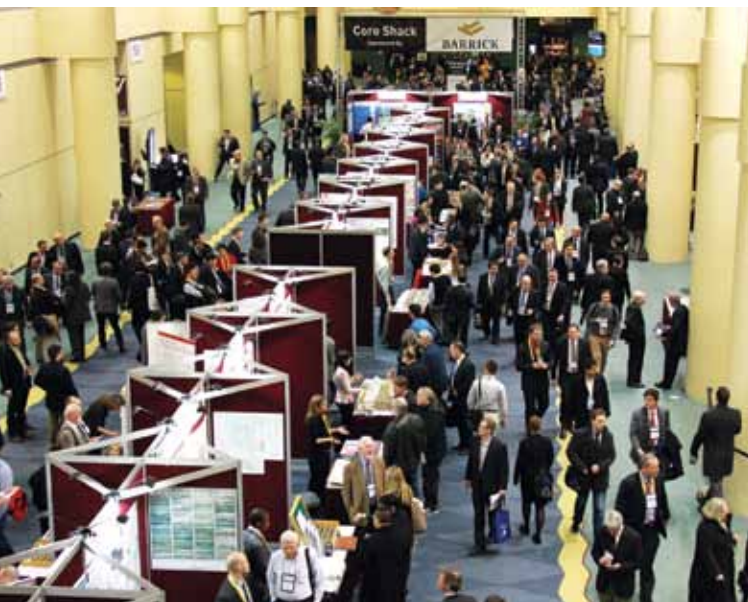
www.tenorex.ca

The Cariboo's only one stop shop for prospectors, miners and hobbyists!



PDAC 2014 REPORT: A NEW VISION FOR THE FUTURE

By Jillian Mitchell



The city of Toronto reigns as the financial capital of the global exploration and mining sector. As such, the Queen City renders itself the ideal backdrop for the world's largest mineral exploration convention, a role it has willfully adopted for over 80 years.

In 2013, the annual Prospectors & Developers Association of Canada's (PDAC) Convention contributed an estimated \$80 million to the local economy and boasted a record 30,000 attendees from 126 countries, including 600 self-identified Aboriginal delegates, 50-plus members of parliament and government, 1,666 student delegates, and over 7,500 international delegates. It's a most successful feat, insists PDAC Executive Director Ross Gallinger, especially in the math of the current market downturn.

The association holds similar hopes for the 2014 PDAC, which will be held March 2nd through 5th at Toronto's Metro Toronto Convention Centre (South Building); subsequently, current registration hints that 2014 is well en route to replay last year's victory.

"In this downturn, we still see very strong signals of great participation—a lot of interest internationally as well," Gallinger says. "We see the PDAC Convention as the networking opportunity for the sector from a global perspective. That's why we see it as very pertinent. And the fact that it's occurred over 80 years means that it's predictable, timely, and people know what they're getting."

"The TSX is the financing market for the resource sector. We have over 800 Canadian companies, which is far greater than any other market out there. This market has understood the business and therefore been very close to the sector as a consequence."

Each year, the four-day, early-March convention proves a wealth of opportunity—with an estimated 500 speakers, 1,000-plus trade show exhibitors, and over 200 educational opportunities, along with many social and networking opportunities. The association's official mobile convention guide, *Mobi*, proves a great complement to the event.

"This year, there'll be a lot of discussion around the current access to capital issues that the junior sector is experiencing. That will be top of mind," says Gallinger, citing the Ring of Fire luncheon and the Mineral Outlook luncheon as must-see events. "The state of the industry is going to be very much topical, as is where we go from here."

The 2014 event will showcase the PDAC's "new vision for future", as outlined in the official strategic plan released in 2012. As Gallinger offers, the vision most appropriately builds upon the successes of the past while looking toward the future and well-complements the association's rebranding of 2012.

"The board approved a new strategy which basically focuses on priority on access to capital, access to land and Aboriginal affairs. We've always been strong in those areas," says the PDAC executive director. "We've really stepped up our game on finance taxation and securities, especially in the last year. I really appreciate the efforts of the PDAC volunteers who've come in to work together in this area." ●



2014

WHERE THE
WORLD'S MINERAL
INDUSTRY MEETS

ONLY GOING TO ONE MINING INVESTMENT SHOW THIS YEAR? MAKE IT PDAC.

March 2–5, 2014

International Convention, Trade Show & Investors Exchange
Metro Toronto Convention Centre
Toronto, Canada
convention.pdac.ca/pdac/conv/

Teck



Prospectors & Developers Association of Canada

Index to Advertisers

AL Sims Group.....	IFC	KPMG Management Services.....	29
ABC Communications.....	70	Mackenzie Hose & Fittings.....	46
Aberdeen Helicopters Ltd.....	38	Mayfair Well Pumps & Water Treatment.....	61
Access Consulting Group.....	28	New Nadina Explorations Limited.....	27
Accurate Mining Services Ltd.....	14	Nor-Burd RV Sales & Services Ltd.....	71
All-West Crane & Rigging Ltd.....	9	North Lands Water & Sewer Supplies Ltd.....	68
Alpha Design.....	65	Northern Energy Constructors.....	75
Alpha Safety Ltd.....	52	Northern Spirit Transportation.....	55
AMCO Wholesale.....	74	Northern Steel Ltd.....	21
Bear Mountaineering.....	73	Northlands Water & Sewer Supplies Ltd.....	68
BK Two-Way Radio.....	6	Northwest Community College.....	3
Black Hawk Drilling.....	55	Northwest Training Ltd.....	57
Brock White Construction Materials.....	39	NR Motors Ltd.....	28
Bulkley Valley Economic Development Association.....	68	P.G. Rental Centre Ltd.....	54
Bulkley Valley Wholesale.....	57	Pacific Geomatics Ltd.....	OBC
Cambridge House International Inc.....	15	Parker Pacific Equipment Sales.....	16
Canwest Propane.....	64	Portal Installations Ltd.....	18
Capri Motor Inn.....	23	Prima Fluorspar Corp.....	43
Cariboo Chrome & Hydraulics Ltd.....	34	Prospectors & Developers Association of Canada.....	77
Cascade Mechanical Ltd.....	50	QSP Packers, LLC.....	20
Central Interior Catering & Consulting Ltd.....	18	Radius Drilling Corp.....	37
China Mining.....	69	Ramada Hotel.....	17
College of New Caledonia.....	25	Raven Rescue.....	47
Dean Mason & Company Inc.....	35	RBC.....	19
District of Fort St. James.....	26	Silverwood Natural Resource Consultants.....	58
District of Mackenzie.....	10	Spanmaster Structures Ltd.....	35
DWB Consulting Services Ltd.....	7	Spectra Power Sports.....	70
EDI Environmental Dynamics Ltd.....	29	Spotless Uniform.....	18
Edward Jones.....	18	Starlynx Communications.....	27
Entrec Crane & Heavy Haul.....	5	Steel Building Canada.....	33
Falcon Equipment.....	41	TBD Consulting.....	65
Fireweed Helicopters.....	59	Tenorex GeoServices.....	75
GEM Systems, Inc.....	34	TGC Consulting Ltd.....	26
Genome British Columbia.....	63	Timberspan Wood Products Inc.....	34
Geometrics.....	56	Town of Smithers.....	48
GeoNorth Engineering Ltd.....	71	Triple K Safety Inc.....	25
Geoscience BC.....	53	University of Northern British Columbia.....	IBC
Geotech Drilling.....	50	Van Houtte Coffee Services.....	7
Gopher Mini Services.....	19	Vanderhoof and Districts Co-operative Association.....	8
Gordon Russell Limited.....	67	VEP Communications and Services.....	45
Guillevin International Co.....	49	Village of Burns Lake.....	20
Industrial Forestry Service Ltd.....	13	Wesco Distribution.....	26
Initiatives Prince George.....	16	Westair Aviation / Cc Helicopters (2011) Ltd.....	47
JT Business Development Corp.....	51	White River Helicopters.....	67
Kim Forest Management.....	23	Wolftek Industries Inc.....	58

**PLEASE SUPPORT THE ADVERTISERS WHO HELPED
MAKE THIS PUBLICATION POSSIBLE.**

“I was drawn to UNBC for its emphasis on environmental research, the integrated learning opportunities, access to mentors, and plenty of degree-related extra-curricular activities. It completely changed my life.”

UNBC is developing leaders across Northern BC every day.

Leaders such as Danielle Smyth, a UNBC graduate and manager of Northwest Community College’s School of Exploration & Mining. Danielle came to UNBC to learn about sustainability which led her to the mining sector, where she has become a leader in advancing a modern, diverse, responsible industry.

There is an industrial renaissance happening in Northern BC, and UNBC graduates, armed with relevant skills and fresh perspectives, are eager to play valuable roles in the region’s development.





www.pacgeo.com



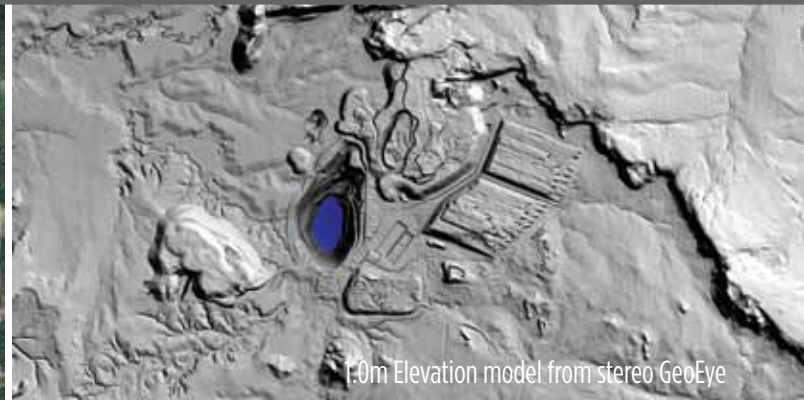
Rendering of GeoEye satellite

- Worldview and Quickbird
- GeoEye and Ikonos
- Pleiades 1A and 1B
- SPOT 6,7 - 1.5m
- SPOT 1,2,3,4,5
- RapidEye and ALOS
- Aster
- Landsat 5,7,8

Pacific Geomatics has a long history in the mining industry. We have been mapping for major & junior mining companies for the past 24 years. High resolution imagery can be used to plan property exploration, map geological information, and analyze surface features. Lower resolution images from Landsat and Aster provide information over larger areas for regional mapping and the identification of significant geological trends.



Pleiades imagery - Labrador



1:0m Elevation model from stereo GeoEye

Our services include DEM extraction and the integration of different datasets such as satellite imagery, geoscientific data and other GIS data into the mapping environment.

We are independent of the satellite companies, and can pick and choose from the wealth of available imagery that has been collected over the past decade. This allows us to find the best imagery for each project, at the least cost. In northern areas where snow and cloud cover restrict imagery coverage we often mosaic portions of images from different satellites - we are experts at that.

Small or Large projects? We routinely supply imagery for areas as small as 25 square kilometers. At the opposite extreme, last year we prepared a single mosaic of 50cm imagery covering 50,000 square kilometers of land for a major integrated exploration and mining company.

Contact us to find out why ...

*We are a key supplier to the Government of Canada
 The Yukon government has selected us as their satellite supplier
 Other imagery providers ask us to process imagery for their clients
 Exploration Geo's worldwide come to Pacific Geomatics for their satellite imagery*

Matt Tomlins, General Manager
Tel: (604) 372-3300 | email Matt@pacgeo.com